



Grahame Park Way, NW9

£600,000

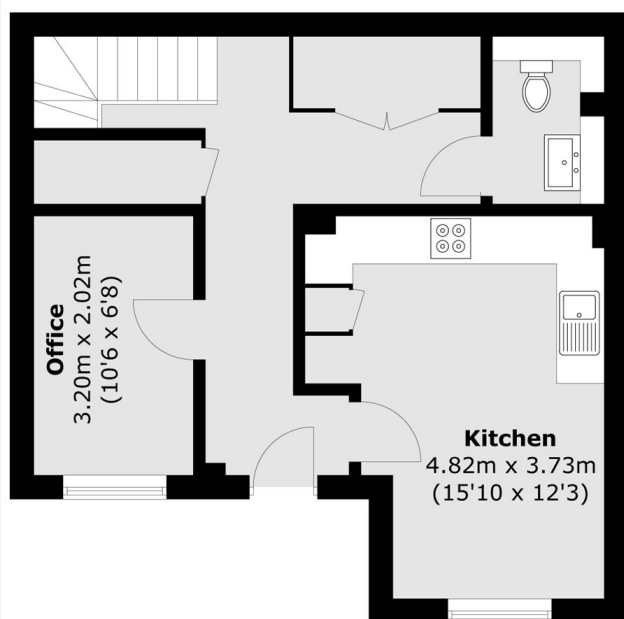
A large three bedroom split level maisonette located within a modern block. This spacious property is in excellent condition throughout, with a balcony and private terrace which leads onto the communal gardens, and benefits from private parking.

Trobridge Parade is ideally located close to local amenities, school's and numerous transport links including; Colindale underground station (Northern line) and Mill Hill Broadway (Thameslink).

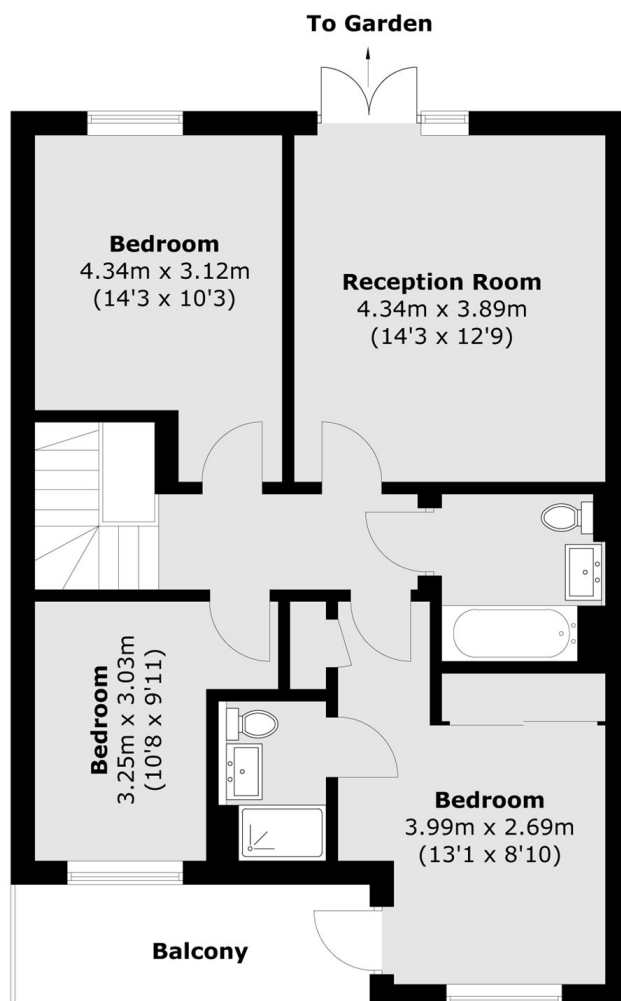
Features

- Split Level Maisonette
- Modern Block
- Three Bedrooms
- Private Parking
- Excellent Condition
- Private Terrace

Grahame Park Way,
London, NW9



Ground Floor



First Floor

Total area (approx.): 113.1 sq. m (1,217.3 sq. ft)
Balcony : 6.7 sq. m (72.1 sq. ft)