



## Russell Gardens, NW11

### £900,000

A spacious three double bedroom, split-level garden flat on Russell Gardens. This spacious flat benefits from private parking, three bathrooms, a guest WC, a spacious entertaining space and a private garden with a modern outbuilding.

Russell Gardens is ideally located in Golders Green with shops, cafes and excellent transport links on your doorstep.

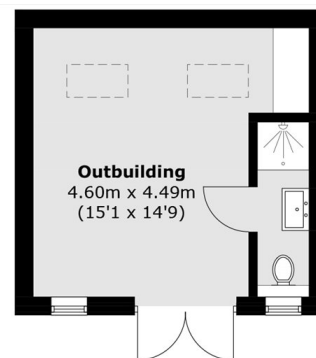
### Features

- Three Bedrooms
- Three Bathrooms
- Excellent Condition
- Driveway
- Outbuilding
- Spacious Garden

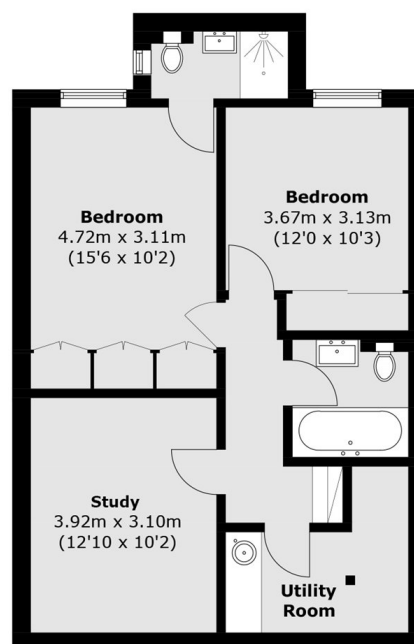
# Russell Gardens, London, NW11



**Ground Floor**



**Ground Floor**  
(Not Shown In Actual  
Location / Orientation)



**First Floor**

Total area (approx.): 143.0 sq. m (1539.3 sq. ft)  
Outbuilding: 20.9 sq. m (225.0 sq. ft)