



Montacute Road, SE6

£350,000

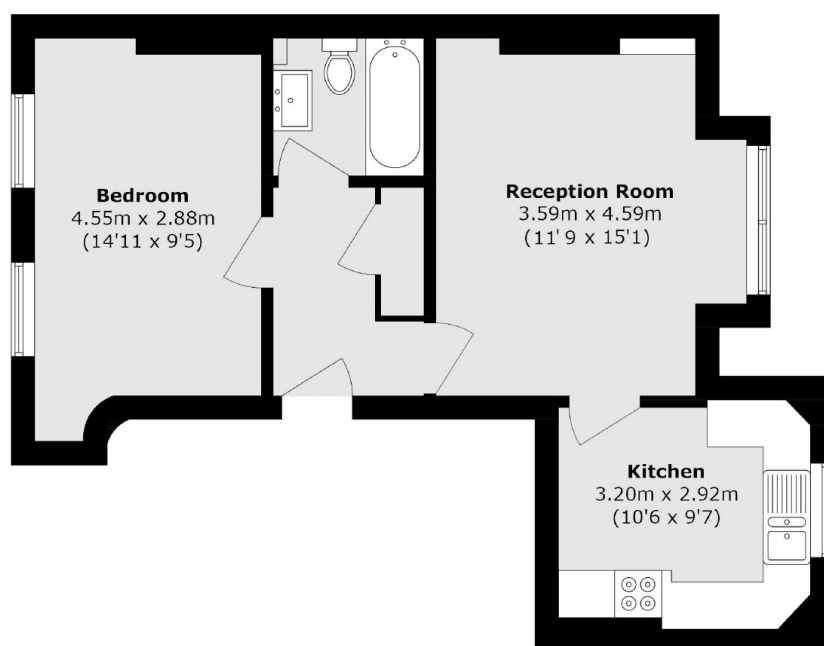
A spacious one bedroom Victorian conversion which is being sold chain free, benefiting from a long lease, a communal garden and off street parking.

Montacute Road is a highly desirable road and is within close proximity to the vibrant hubs of Catford, Brockley, and Honor Oak, there is a wide selection of bars, restaurants, and local amenities. The property is exceptionally well-connected, with Catford, Catford Bridge, and Honor Oak Park stations all within easy reach, offering frequent services into London Bridge, Charing Cross, and Canary Wharf via the Overground and National Rail. The area is also well served by a number of Ofsted-rated 'Outstanding' schools.

Features

- One Bedroom
- Victorian Conversion
- Long Lease
- Chain Free
- Communal Garden
- Great Location

Montacute Road, London, SE6



Total area (approx.): 49.3 sq. m (530.6 sq. ft)