



Brockley Road, SE4

£2,500 Per calendar month

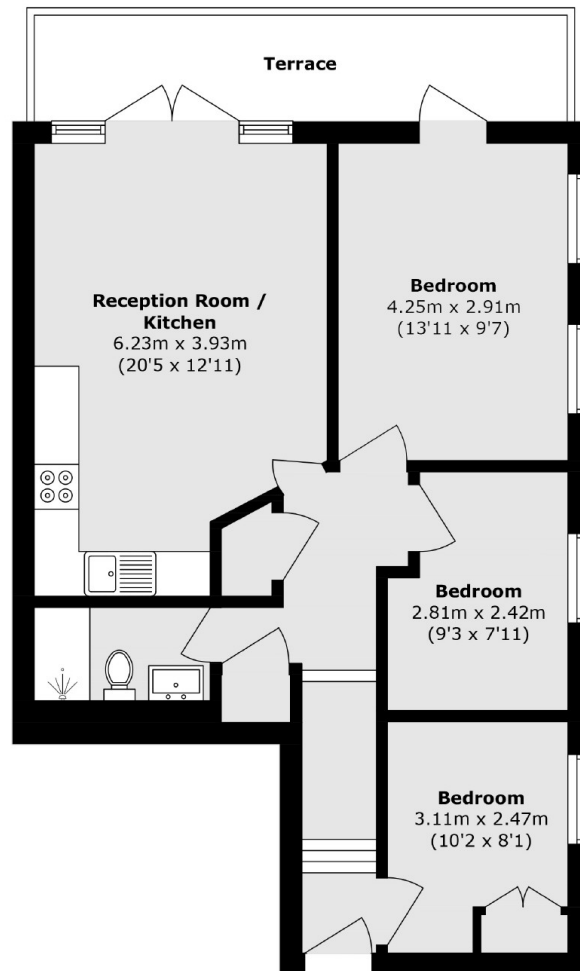
A stunning first floor flat comprising an open plan kitchen/reception that leads to a private balcony, three double bedrooms and a modern bathroom with walk-in shower

Conveniently located for Crofton Park, Brockley and Ladywell train stations and the open spaces of Blythe Hill, Hilly Fields and Brockwell. The great independent cafés and shops of Crofton Park are located on your door step.

Features

- Brand New Development
- First Floor Flat
- Open-Plan Kitchen/Reception
- Private Balcony
- Three Double Bedrooms
- Modern Bathroom

Brockley Road,
London, SE4



Total area (approx.): 66.7 sq. m (717.9 sq. ft)

Terrace area (approx.): 10.1 sq. m (108.7 sq. ft)

Dexters

Lewisham
228 Algernon Road
London
SE13 7AG

Lettings
0208 690 8020

Energy Rating: D. We aim to make our particulars both accurate and reliable. However they are not guaranteed; nor do they form part of an offer or contract. If you require clarification on any points then please contact us, especially if you're traveling some distance to view. Please note that appliances and heating systems have not been tested and therefore no warranties can be given as to their good working order.

 **RICS** | Regulated
Estate Agent
and Letting Agent

[dexters.co.uk](https://www.dexters.co.uk)