



Lewisham High Street, SE13

£1,600 Per calendar month

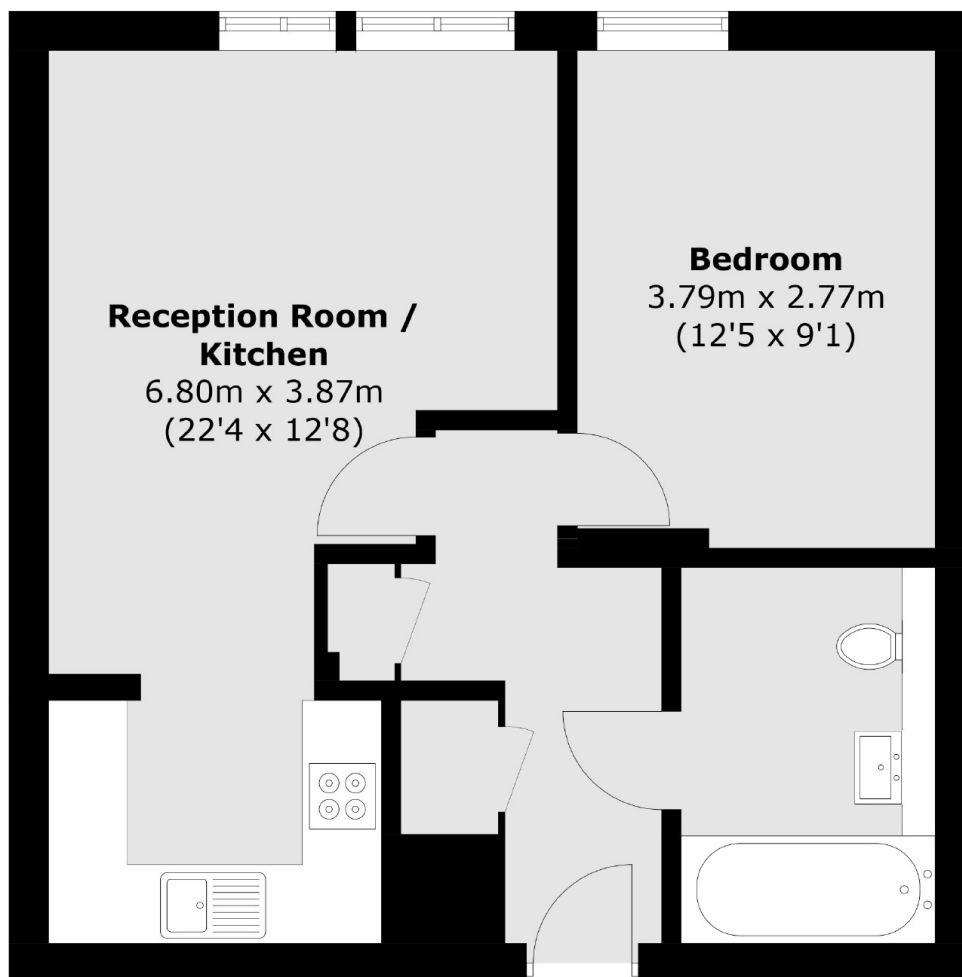
A modern, third floor apartment forming part of this imposing converted building. The property comprises an open plan kitchen reception, double bedroom and a large family bathroom. The property also has lift access.

Situated in the heart of Lewisham High Street giving easy access to Lewisham Station and DLR.

Features

- Modern Development
- One Double Bedroom
- Lift Access
- Open plan lounge/Kitchen
- Modern bathroom
- Close to Lewisham Station & DLR

Lewisham High Street,
London, SE13



Total area (approx.): 45.9 sq. m (494.1 sq. ft)

Dexters

Lewisham
228 Algernon Road
London
SE13 7AG
Lettings
0208 690 8020

Energy Rating: C. We aim to make our particulars both accurate and reliable. However they are not guaranteed; nor do they form part of an offer or contract. If you require clarification on any points then please contact us, especially if you're traveling some distance to view. Please note that appliances and heating systems have not been tested and therefore no warranties can be given as to their good working order.

 **RICS** | Regulated
Estate Agent
and Letting Agent

[dexters.co.uk](https://www.dexters.co.uk)