



Conington Road, SE13

£1,550 Per calendar month

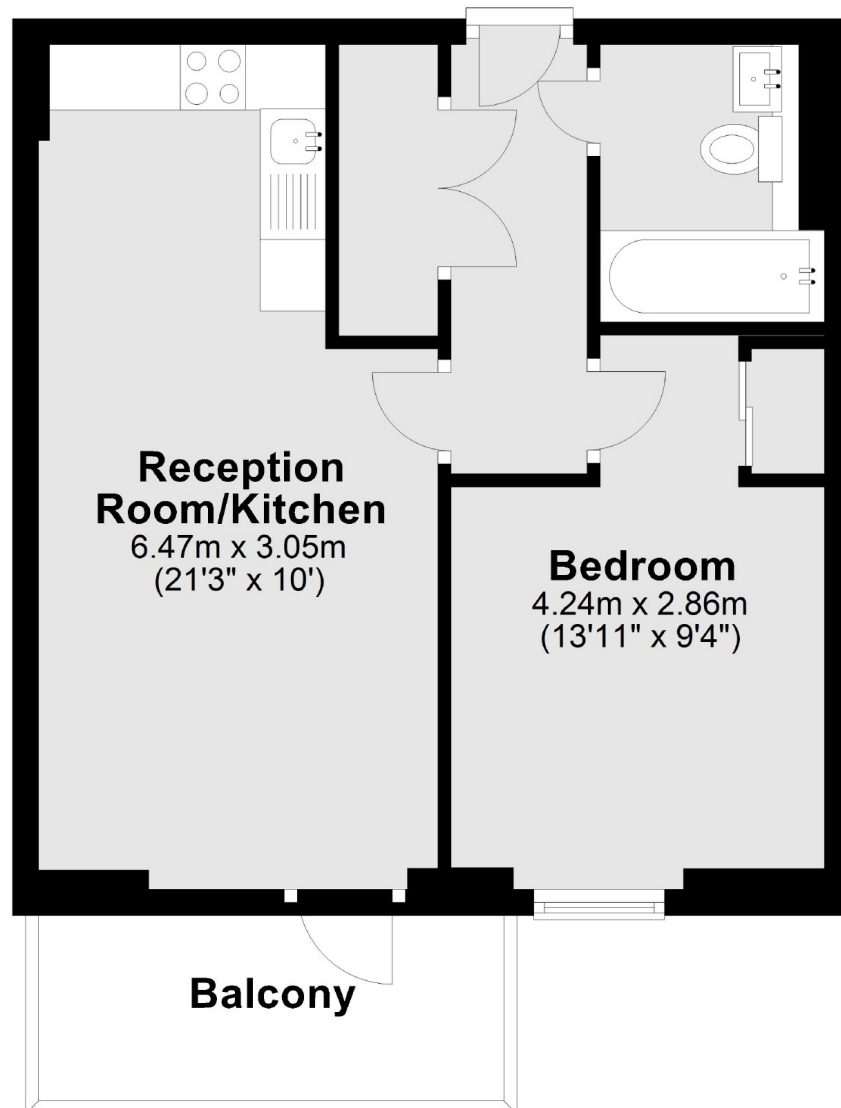
A modern one double bedroom, third floor apartment with an open plan living/kitchen that leads to a balcony, a double bedroom and separate bathroom. The development offers 24 hour concierge and communal grounds, and has lift access.

Situated in an excellent position for the DLR and Lewisham station which are just minutes away, close to the town centre for shops and amenities for its cafés, bars and restaurants.

Features

- Large Reception Room
- Fitted Kitchen
- Concierge
- Private Balcony
- Moments From The DLR/ Lewisham Station
- Communal Gardens

Conington Road,
London, SE13



Total area: approx. 38.9 sq. metres (418.4 sq. feet)

Dexters

Lewisham
228 Algernon Road
London
SE13 7AG
Lettings
0208 690 8020

Energy Rating: B. We aim to make our particulars both accurate and reliable. However they are not guaranteed; nor do they form part of an offer or contract. If you require clarification on any points then please contact us, especially if you're traveling some distance to view. Please note that appliances and heating systems have not been tested and therefore no warranties can be given as to their good working order.

 **RICS** | Regulated
Estate Agent
and Letting Agent

dexters.co.uk