



## Bromley Road, SE6

£1,700 Per calendar month

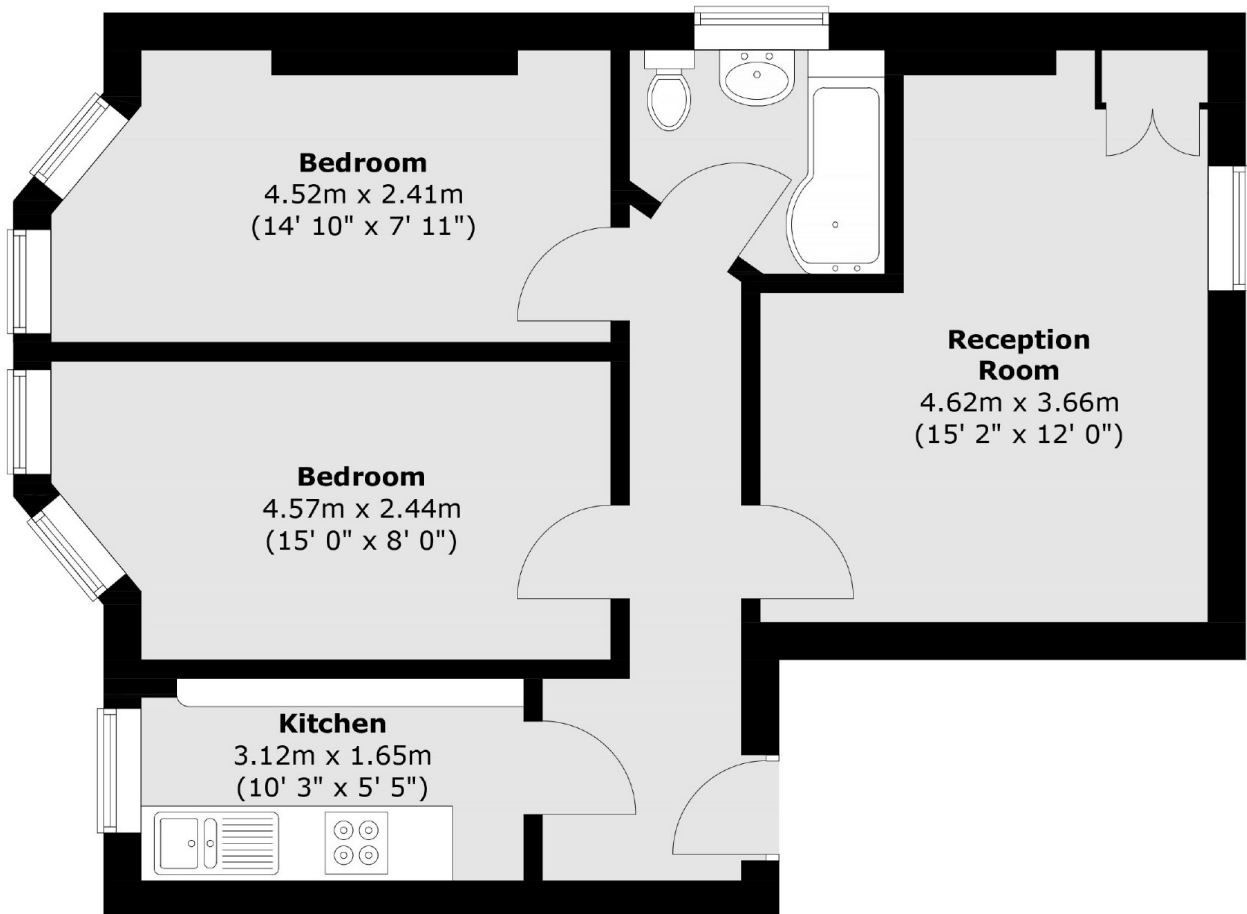
A well presented period conversion offering two double bedrooms, large lounge, kitchen and bathroom situated perfectly for transport links and local amenities in Catford.

This property is ideally located with plenty of local amenities nearby such as Catford High street offering an array of shops, buses and great transport links such as Catford & Catford Bridge railway stations only a short walk away both offering quick and frequent services into London.

### Features

- First Floor Flat
- Two Double Bedrooms
- Modern Bathroom
- Separate Kitchen
- Close To Amenities
- Close To Station

Bromley Road,  
London, SE6



Total area (approx.) : 53.5 sq. m (576 sq. ft)

**Dexters**

Lewisham  
228 Algernon Road  
London  
SE13 7AG  
Lettings  
0208 690 8020

Energy Rating: D. We aim to make our particulars both accurate and reliable. However they are not guaranteed; nor do they form part of an offer or contract. If you require clarification on any points then please contact us, especially if you're traveling some distance to view. Please note that appliances and heating systems have not been tested and therefore no warranties can be given as to their good working order.

 **RICS** | Regulated  
Estate Agent  
and Letting Agent

[dexters.co.uk](http://dexters.co.uk)