



## Victoria Terrace, N4

£461 Per week

Dexters are pleased to bring this Furnished, well presented one bedroom property to the market for rent, located in a quiet cul-de-sac off Victoria Road. This flat has an open plan living area with bi-fold doors looking out to the courtyard, a double bedroom, a modern bathroom suite equipped with a free standing bath and separate shower. (Rent + £200 covers Electricity/Heating, Water and Wifi)

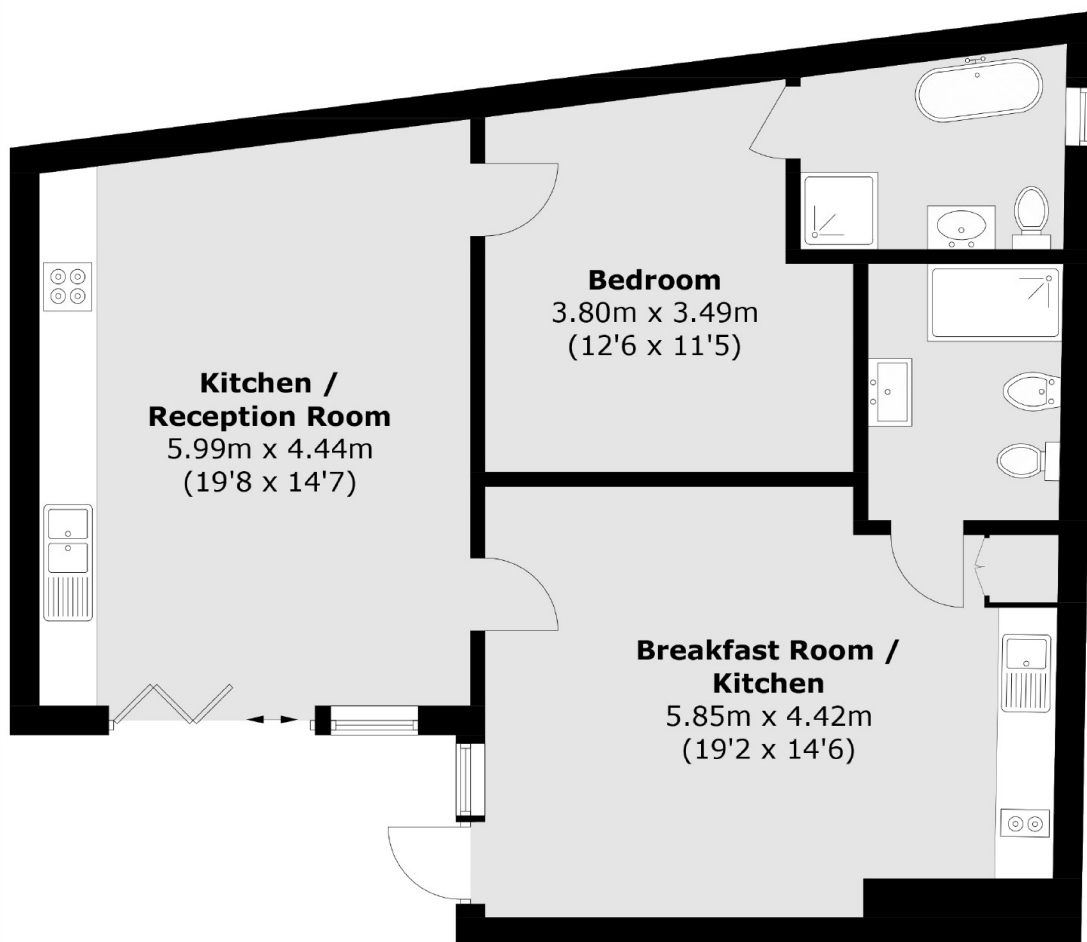
Available from 09/05/2025.

Victoria Road is ideally positioned close to Finsbury Park station and a great selection of shops, bars, restaurants and cafés that the Finsbury Park and the Stroud Green area have to offer.

### Features

Open Plan  
Modern Finish  
Bi-Fold Doors  
Furnished  
Great Location

# Victoria Terrace, London, N4



## Ground Floor

Total area (approx.): 78.3 sq. m (842.8 sq. ft)