



Fonthill Road, N4

£475,000

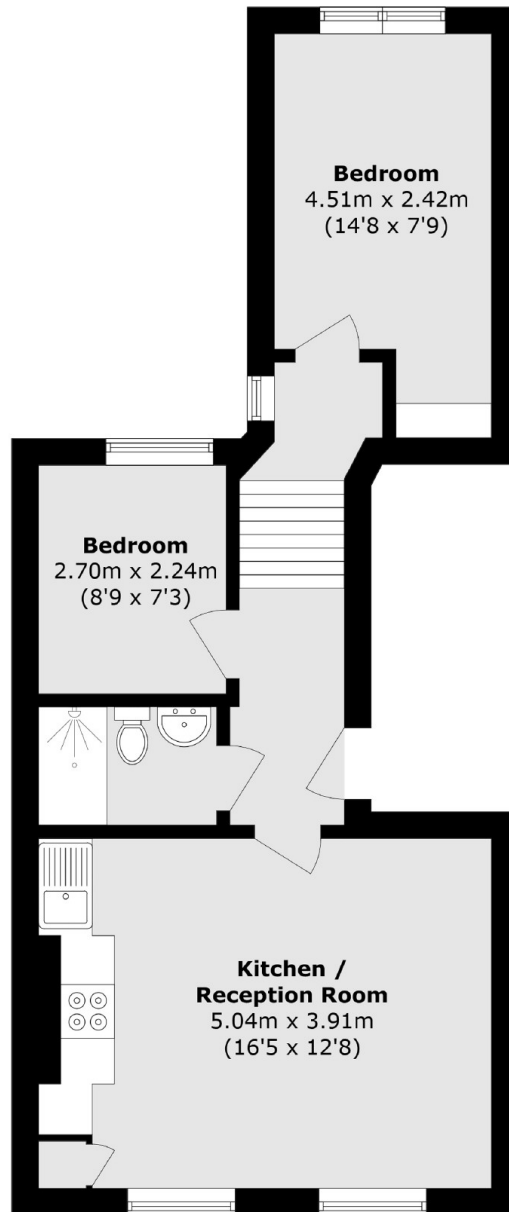
This beautifully presented split level two-bedroom flat is located on the first floor of a period conversion terrace and features a spacious fitted open plan kitchen and reception room with high ceilings.

Fonthill Road is conveniently located to access several shops, cafés and eateries, as well as the open green spaces of Finsbury Park, Parkland Walk. Finsbury Park station is close by with access to the Piccadilly line, Victoria line and National Rail.

Features

- First Floor
- Chain Free
- Two Bedroom
- Share of Freehold
- Great Transport Links
- Open Plan Reception / Kitchen

Fonthill Road,
London, N4



Total area (approx.): 45.2 sq. m (486.5 sq. ft)

Dexters

Finsbury Park
87 Stroud Green Road
Finsbury Park
London
Sales
020 7483 6360

Energy Rating: C. We aim to make our particulars both accurate and reliable. However they are not guaranteed; nor do they form part of an offer or contract. If you require clarification on any points then please contact us, especially if you're traveling some distance to view. Please note that appliances and heating systems have not been tested and therefore no warranties can be given as to their good working order.

 **RICS** | Regulated
Estate Agent
and Letting Agent

dexters.co.uk