

Mayes Road, N22

£400,000

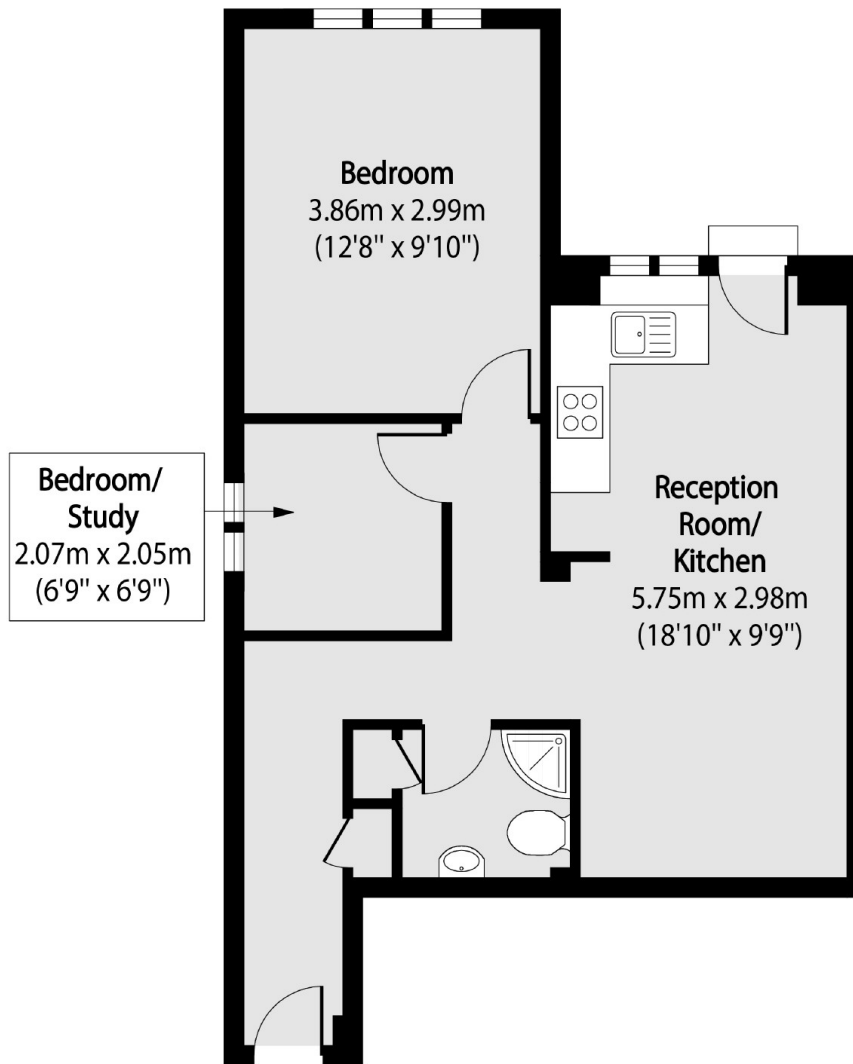
A two bedroom, garden flat in a converted Victorian building. Presented in very good decorative order throughout, the property offers an open plan kitchen/ reception, a private entrance and a large private garden.

Mayes Road is well-located for easy access to Wood Green underground station (Piccadilly line) and is also close to nearby shops, bars and restaurants. The green open spaces of Alexandra Palace is also close by.

Features

- South West Facing Garden
- Recently Refurbished
- Chain Free
- Two Bedrooms
- Close To Amenities
- Private Entrance

Mayes Road,
London, N22



Total area (approx): 45.72 sq m (492 sq. ft)

Dexters

Finsbury Park
87 Stroud Green Road
Finsbury Park
London
Sales
020 7483 6360

Energy Rating: C. We aim to make our particulars both accurate and reliable. However they are not guaranteed; nor do they form part of an offer or contract. If you require clarification on any points then please contact us, especially if you're traveling some distance to view. Please note that appliances and heating systems have not been tested and therefore no warranties can be given as to their good working order.

 **RICS** | Regulated
Estate Agent
and Letting Agent

dexters.co.uk