



## Hornsey Road, N7

### £500,000

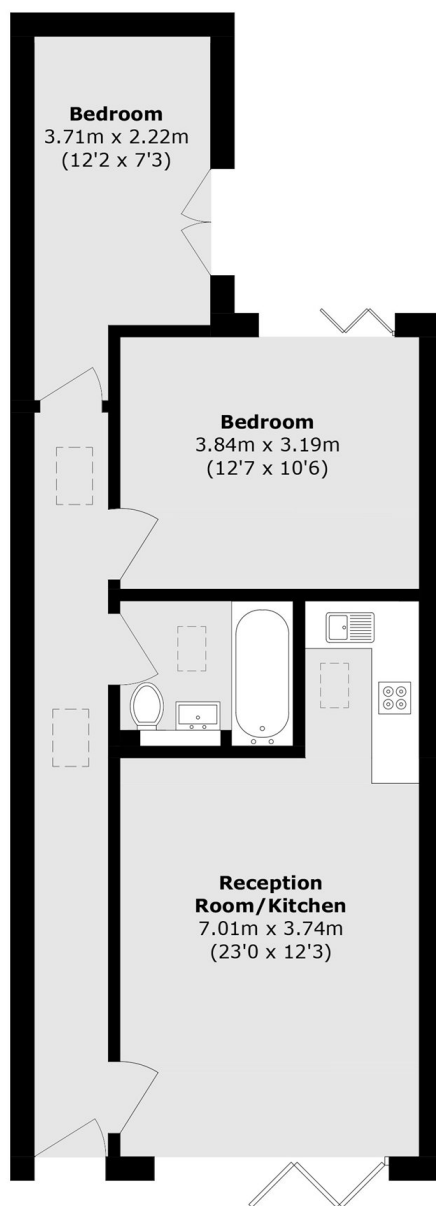
A very well presented two double bedroom apartment located on Hornsey Road. This property offers an open plan kitchen and living area with direct access to a private patio from both bedrooms.

This property is close to both Arsenal Underground station (Piccadilly Line) and Finsbury Park underground station (Victoria Line). The property also benefits from plenty of amenities close to hand.

### Features

- Two Double Bedroom
- Open Plan Living
- Modern Bathroom
- Great Transport Links
- Leasehold
- Private Patio

# Hornsey Road, LONDON, N7



Total area (approx.): 58.5 sq. m (629.6 sq. ft)