



## Woodstock Road, N4

### £500,000

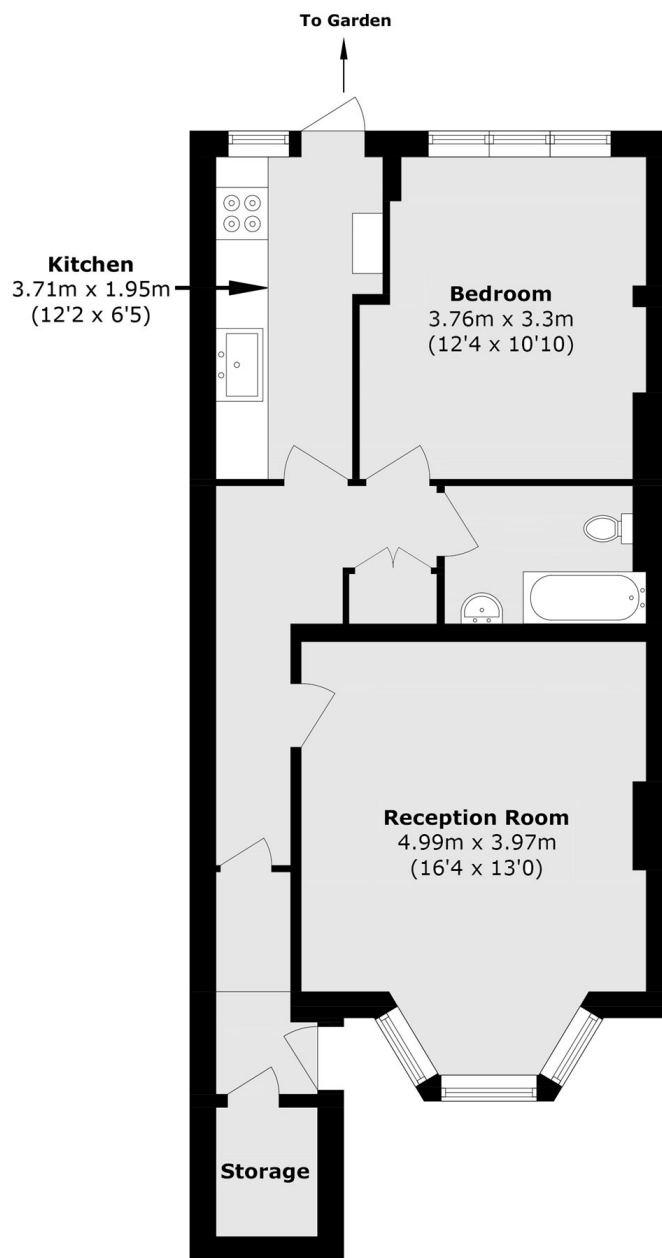
A spacious one bedroom apartment located on the lower ground floor of a converted Victorian building. The property benefits from separate reception room and kitchen, ample storage and a private rear garden.

Woodstock Road is a quiet, residential turning, perfectly positioned close to Finsbury Park station (Great Northern, Thameslink, Victoria and Piccadilly lines) as well as a plethora of independent shops and restaurants.

### Features

- Period Conversion
- One Bedroom
- Share of Freehold
- Private Garden
- Chain Free
- Great Transport Links

# Woodstock Road, London, N4



Total area (approx.): 52.5 sq. m (565.1 sq. ft)