



Goodwin Street, N4

£675,000

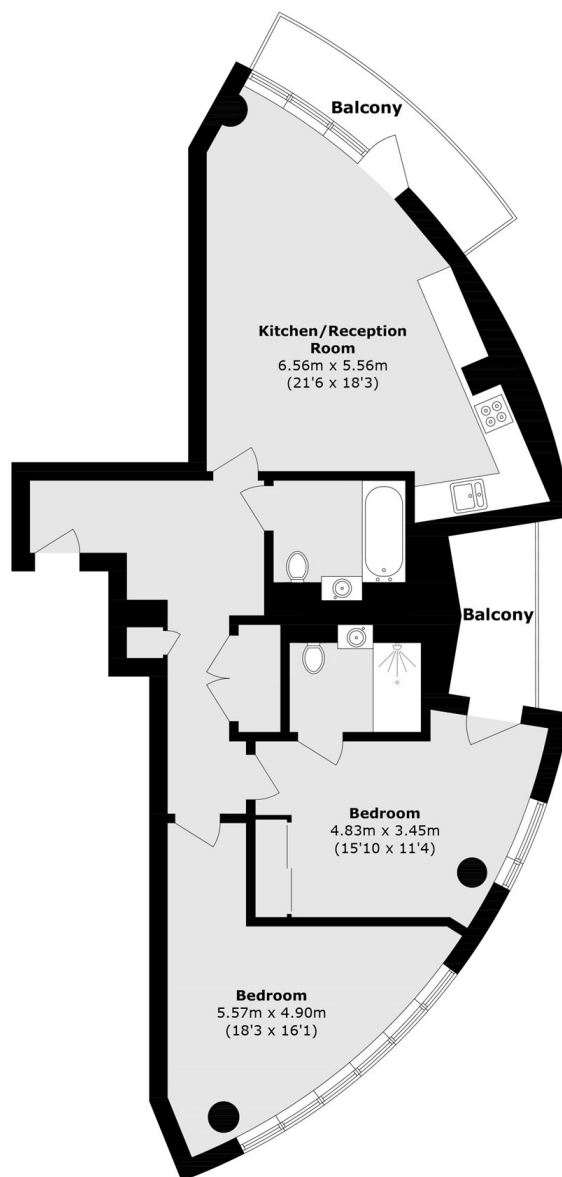
This two bedroom apartment is set on the twelfth floor of this modern block. This property benefits from two private balconies, an open plan kitchen and a stunning communal roof terrace.

City North Place is ideally placed next to Finsbury Park and is moments from the underground station (Victoria and Piccadilly lines) as well as a wide variety of independent shops, cafés and restaurants.

Features

- Two Private Balconies
- Modern Build
- 24 Hour Concierge
- Excellent Transport Links
- Chain Free
- Open Plan Kitchen/Reception

Goodwin Street, London, N4



Total area (approx.): 78.8 sq. m (842.2 sq. ft)
Balcony Total (approx.): 8.9 sq. m (95.7 sq. ft)

Dexters

Finsbury Park
87 Stroud Green Road
Finsbury Park
London
Sales
020 7483 6360

Energy Rating: . We aim to make our particulars both accurate and reliable. However they are not guaranteed; nor do they form part of an offer or contract. If you require clarification on any points then please contact us, especially if you're traveling some distance to view. Please note that appliances and heating systems have not been tested and therefore no warranties can be given as to their good working order.

 **RICS** | Regulated
Estate Agent
and Letting Agent

[dexters.co.uk](https://www.dexters.co.uk)