



Tollington Park, N4

£425,000

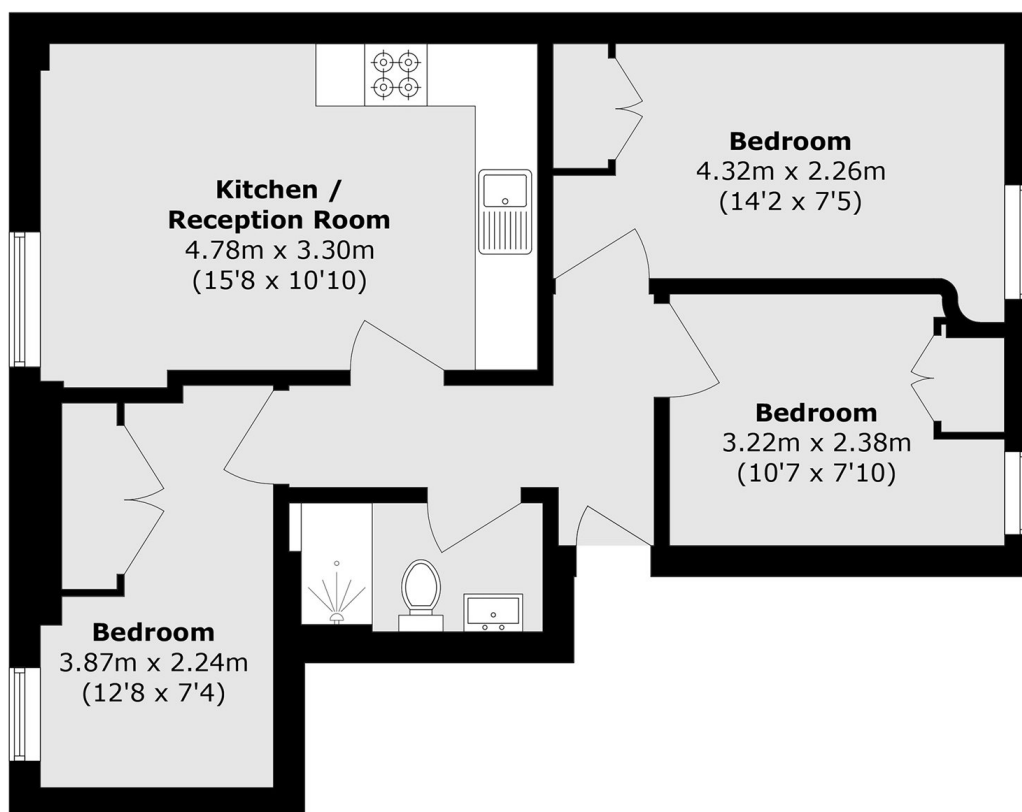
Set within a period conversion, this stylish second floor apartment offers three well-proportioned bedrooms and a bright open plan living space, perfect for those seeking both convenience and style.

Plough Apartments is ideally located on Tollington Park, providing easy access to excellent transport links to the City and West End from Finsbury Park underground station, just 0.8 miles away.

Features

- Second Floor
- Three Bedrooms
- Open Plan Living
- Period Conversion
- Excellent Location
- Great Transport Links

Tollington Park, London, N4



Total area (approx.): 52.1 sq. m (560.8 sq. ft)