



Medina Road, N7

£350,000

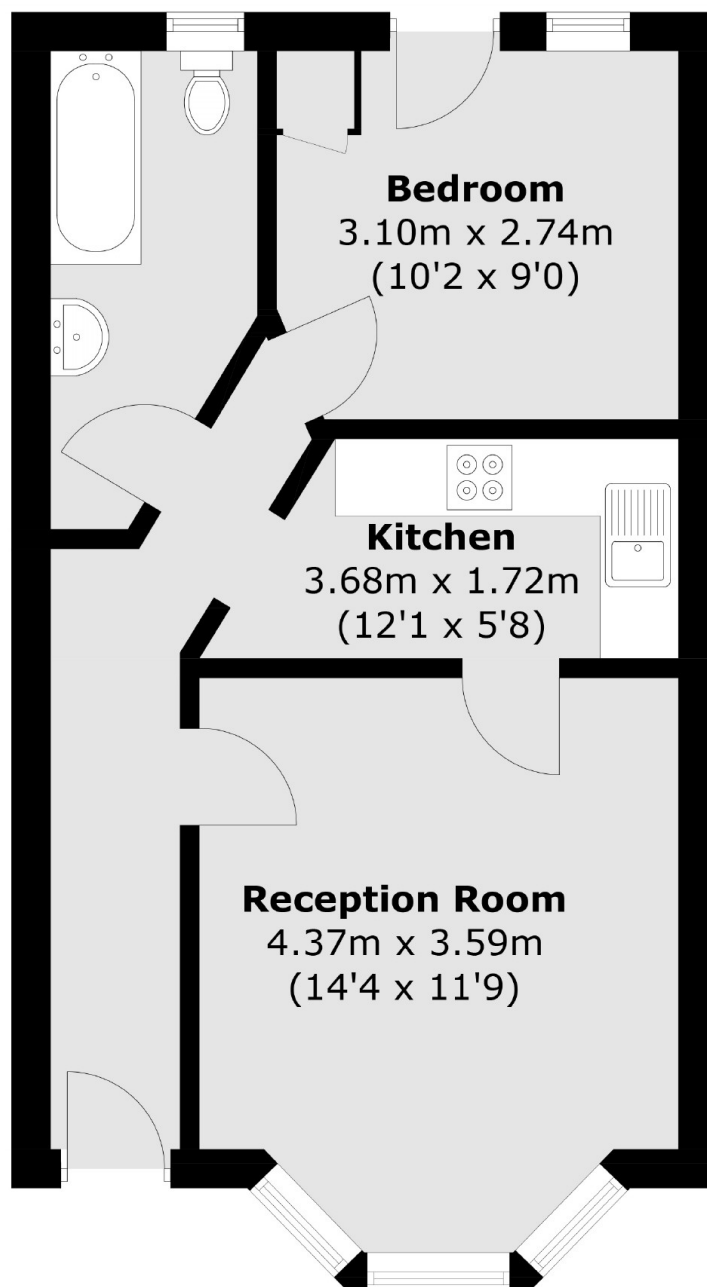
A well-presented lower ground flat set within an attractive Victorian building. Available to the market 'chain-free', this property offers a spacious, separate living room, separate kitchen, double bedroom and a good size bathroom.

Medina Road is well-located for access to Finsbury Park station (Piccadilly line, Victoria line and National Rail) and is also close to plethora of nearby shops, local parks and a leisure centre.

Features

- New Lease
- One Bedroom
- Private Entrance
- Period Conversion
- Great Transport Links
- Chain Free

Medina Road, London, N7



Total area (approx.): 43 sq. m (462.8 sq. ft)

Dexters

Finsbury Park
87 Stroud Green Road
Finsbury Park
London
Sales
020 7483 6360

Energy Rating: D. We aim to make our particulars both accurate and reliable. However they are not guaranteed; nor do they form part of an offer or contract. If you require clarification on any points then please contact us, especially if you're traveling some distance to view. Please note that appliances and heating systems have not been tested and therefore no warranties can be given as to their good working order.

 **RICS** | Regulated
Estate Agent
and Letting Agent

[dexters.co.uk](https://www.dexters.co.uk)