



Goodwin Street, N4

£500,000

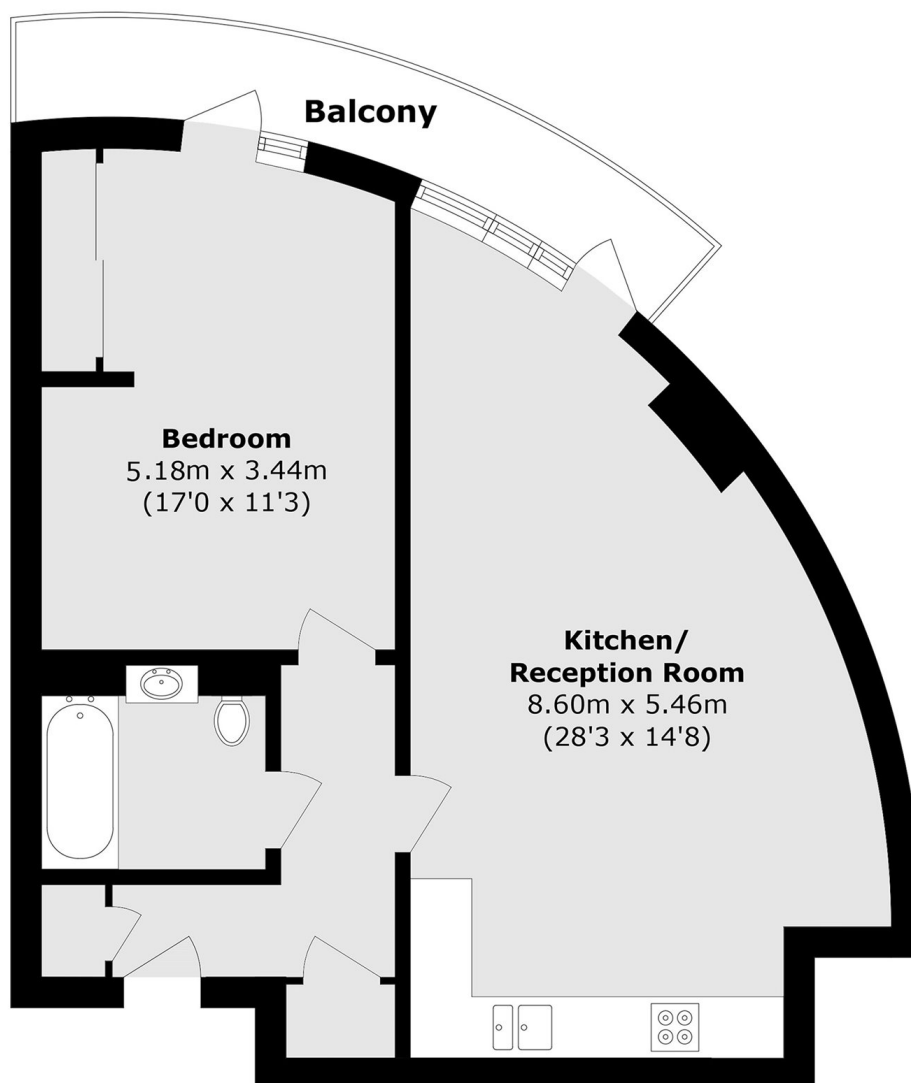
A large one bedroom apartment set on the ninth floor of a modern block. This apartment benefits from a private balcony and open plan kitchen area offering stunning views of London.

City North Place is ideally placed next to Finsbury Park and is moments from the underground station (Victoria and Piccadilly lines) as well as a wide variety of independent shops, cafés and restaurants.

Features

- Leasehold
- One Bedroom
- Private South Facing Balcony
- 24 Hour Concierge
- Excellent Transport Links
- Chain Free

Goodwin Street, London, N4



Total area (approx.): 57.8 sq. m (622.2 sq. ft)

Balcony area (approx.): 5.8 sq. m (62.4 sq. ft)