



Drayton Park, N5

£325,000

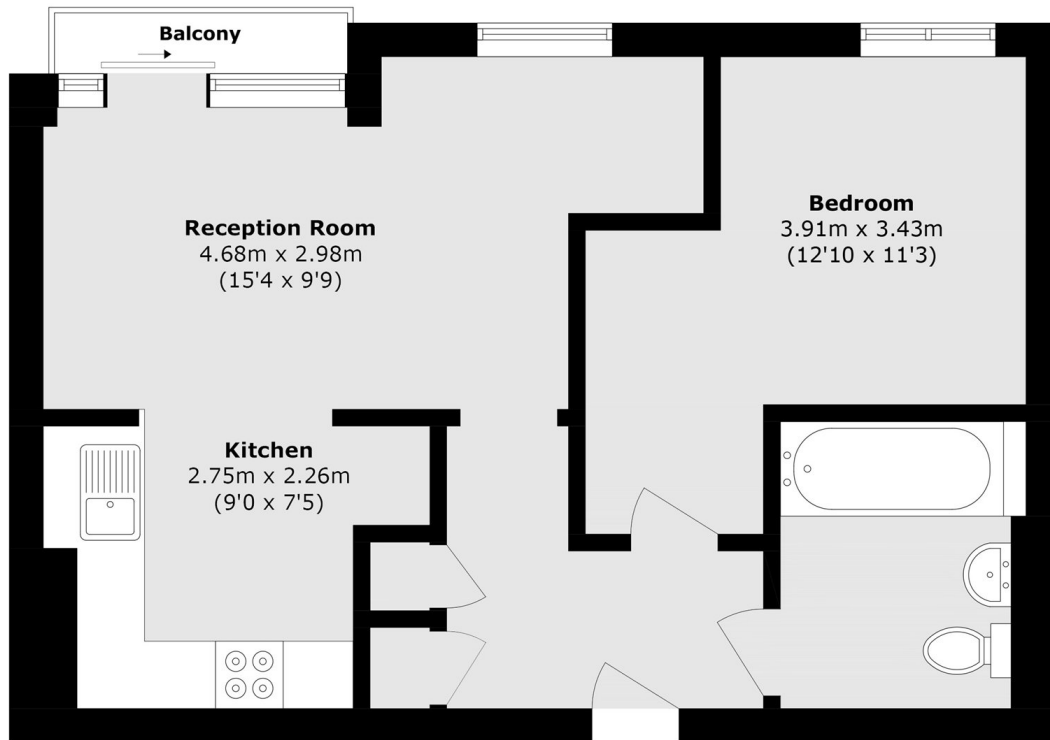
A well presented one double bedroom apartment located within a secure development with a concierge and lift access. This property offers an open plan kitchen and reception area and a private balcony.

Ashburton Triangle is located off Drayton Park which is just moments from Arsenal tube station as well as being within easy reach of Drayton Park, Holloway Road and Highbury & Islington stations.

Features

- One Double Bedroom
- Open Plan Living
- Balcony
- Concierge
- Lift Access
- Desirable Location

Drayton Park, London, N5



Total area (approx.): 49.1 sq. m (528.5 sq. ft)

Balcony area (approx.): 1.4 sq. m (15.1 sq. ft)