



Hanley Road, N4

£650,000

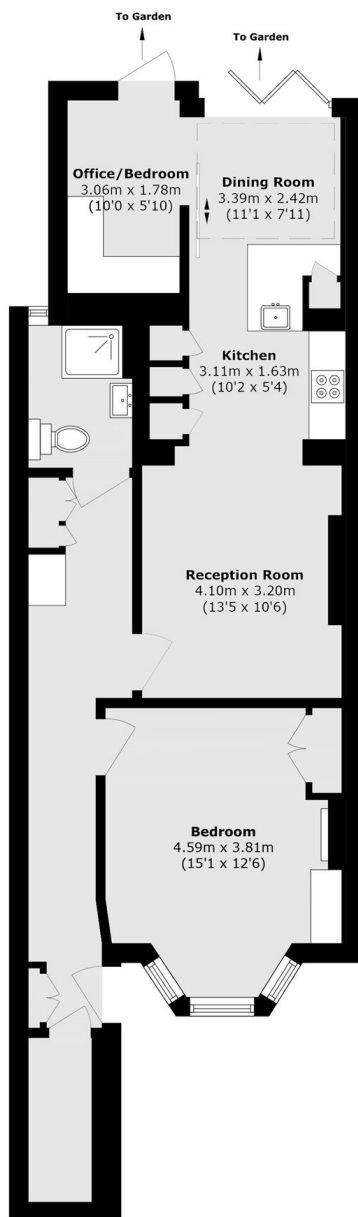
A beautifully presented two bedroom flat set within a Victorian terraced house, featuring its own entrance and private garden. The property boasts a bright open plan living space and is offered to the market chain free.

Located within walking distance to Stroud Green Road and Finsbury Park station, which provides quick access to the City. The Parkland Walk nature reserve and Finsbury Park are both within easy walking distance.

Features

- Two Bedroom
- Private Entrance
- Private Garden
- Share of Freehold
- Chain Free
- Great Transport Links

Hanley Road, London, N4



Total area (approx.): 70.5 sq. m (758.8 sq. ft)