



Almington Street, N4 £400,000

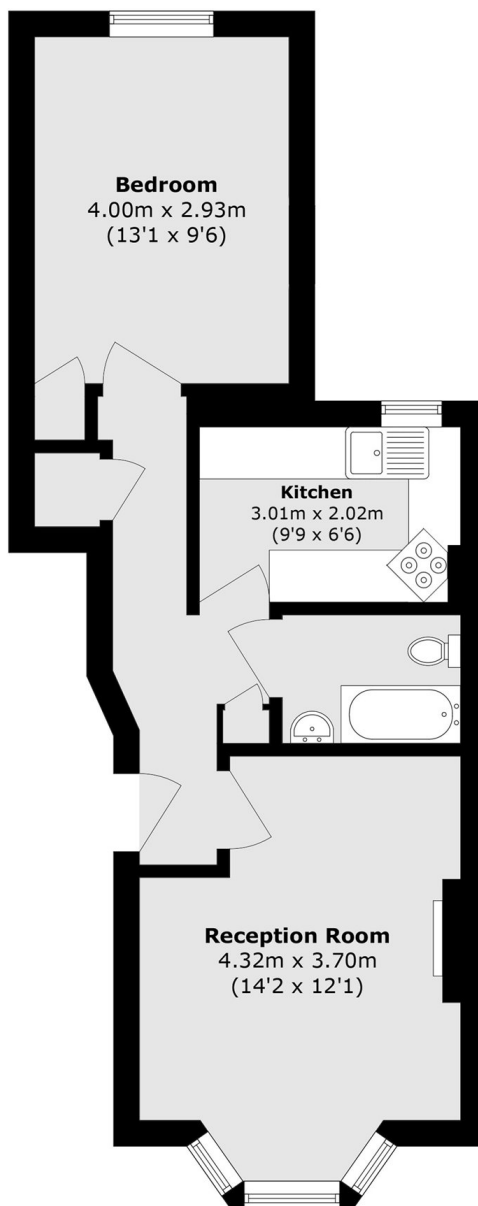
A beautifully presented one-bedroom flat set within a period conversion. The property boasts a spacious reception room with a bay window allowing excellent natural light, alongside a separate kitchen.

Almington Street is located within a quiet residential area, within close proximity from all the local amenities of Crouch End, Stroud Green Road and Finsbury Park where you can find numerous shops, restaurants, cafés and pubs. Local transport links can be found moments away, including Crouch Hill Overground (0.3 miles), Finsbury Park Underground & National Rail (0.7 miles) and numerous bus routes.

Features

- One Bedroom
- Great Transport Links
- Period Conversion
- Sought After Location
- Leasehold
- Quiet Road

Almington Street, LONDON, N4



Total area (approx.): 50.0 sq. m (538.2 sq. ft)