



Medina Road, N7

£300,000

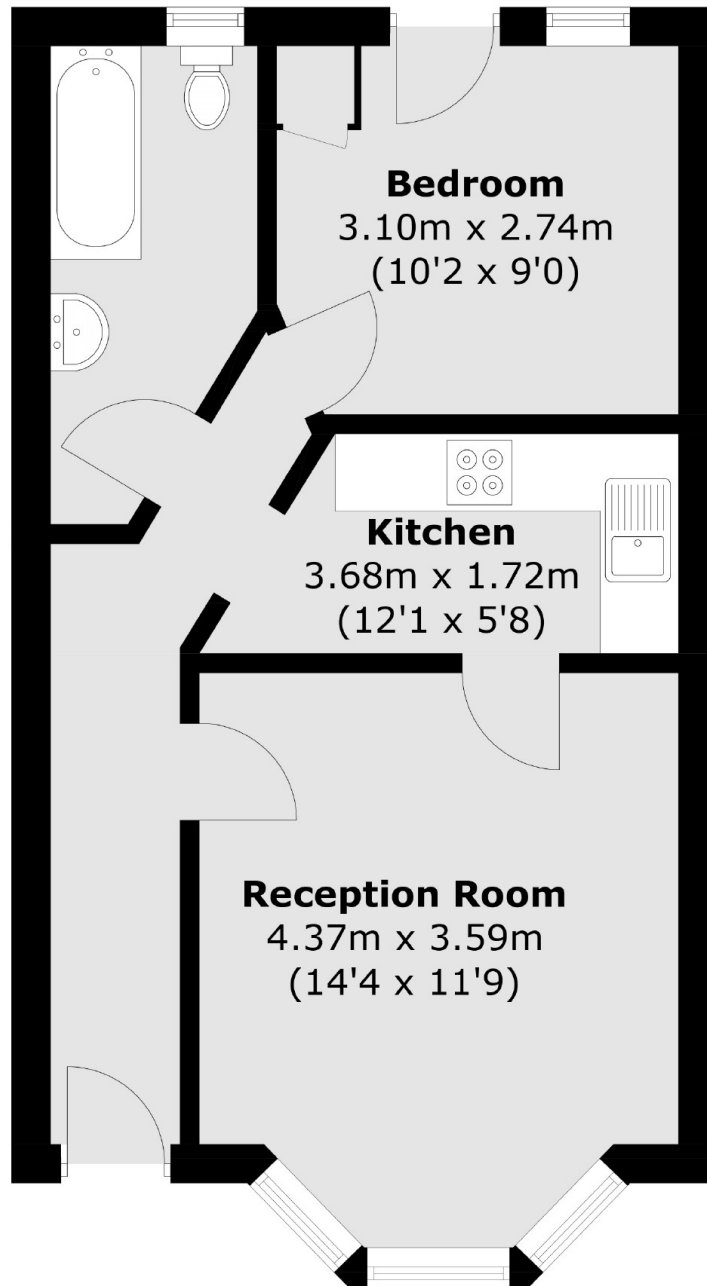
A well-presented lower ground flat set within an attractive Victorian building. Available to the market 'chain-free', this property offers a spacious, separate living room, separate kitchen, double bedroom and a good size bathroom.

Medina Road is well-located for access to Finsbury Park station (Piccadilly line, Victoria line and National Rail) and is also close to plethora of nearby shops, local parks and a leisure centre.

Features

- New Lease
- One Bedroom
- Private Entrance
- Period Conversion
- Great Transport Links
- Chain Free

Medina Road, London, N7



Total area (approx.): 43 sq. m (462.8 sq. ft)