



Tollington Park, N4

£2,350 Per week

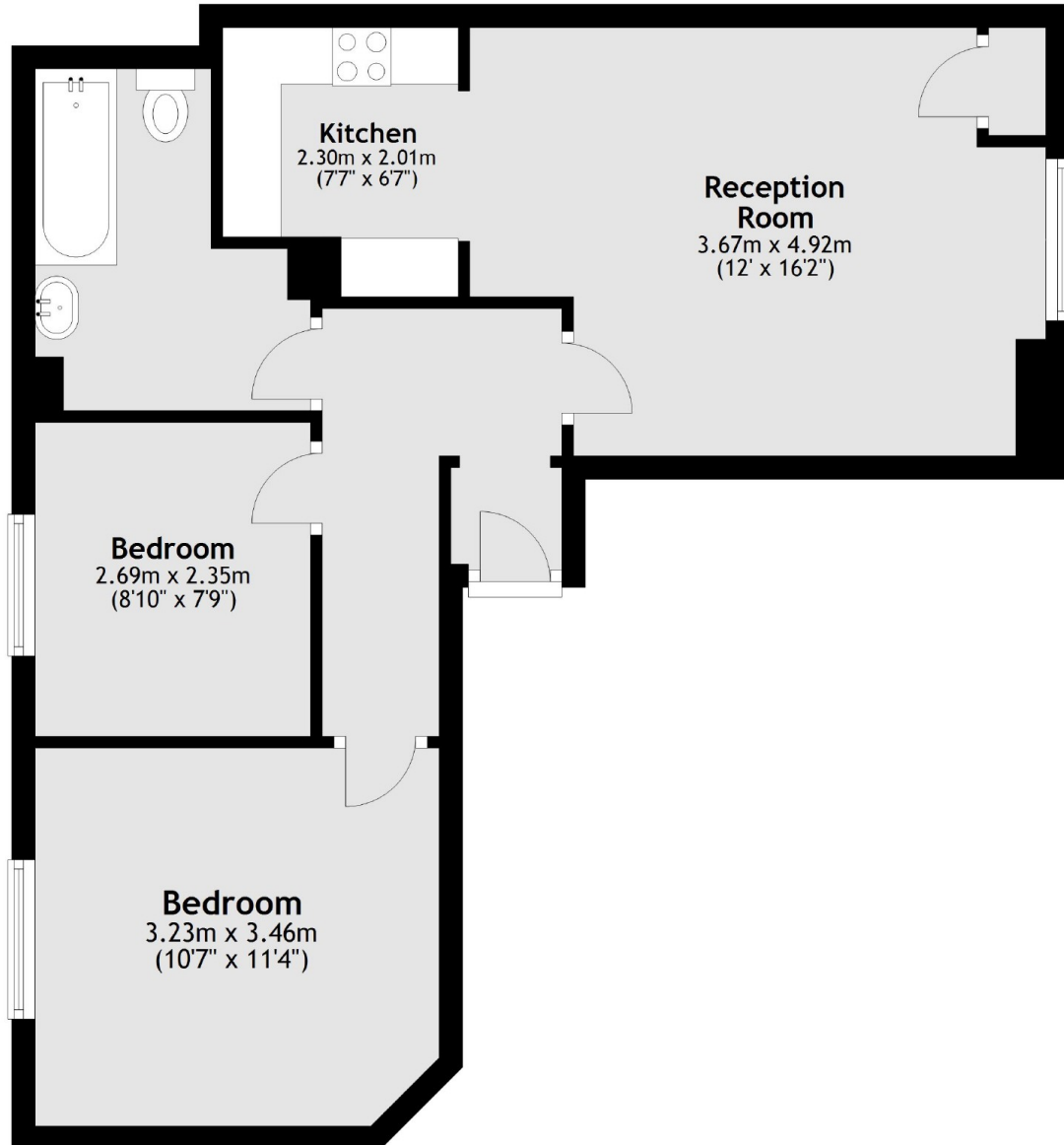
This two double bedroom flat is on the ground floor of a converted Victorian school and is ideally located in the heart of Finsbury Park. The apartment has new wood floors throughout, a spacious living/dining room with adjoining kitchen and brand new bathroom with shower over bath. There is also access to a communal outdoor area.

Located on Tollington Park and within easy reach of the local shops and cafes on both Stroud Green and Hornsey Road. Finsbury Park underground station is a short distance away for access to Victoria, Piccadilly and mainline services.

Features

- Two Double Bedrooms
- New Wood Floors Throughout
- Shared Communal Garden
- Modern Kitchen
- Part Furnished
- Convenient Location

Tollington Park, London, N4



Total area: approx. 51.7 sq. metres (556.9 sq. feet)