



Endymion Road, N4

£750,000

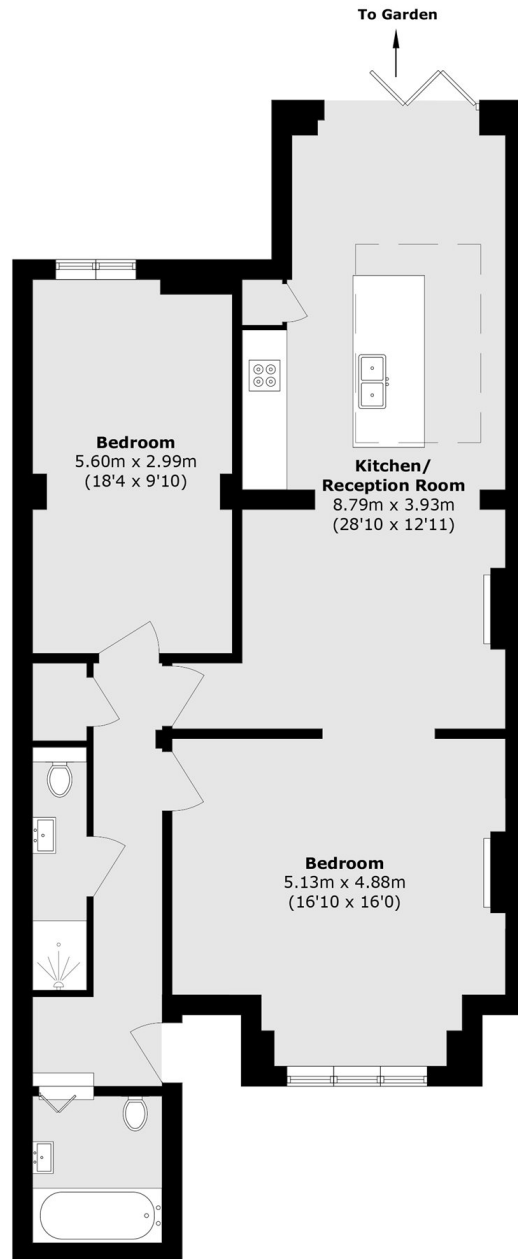
This well-proportioned, two bedroom garden flat offers approximately 1,008 sq ft of living space, featuring generous room sizes, a practical layout, and direct access to outdoor space, making it ideal for modern living.

Located within easy reach of Green Lanes retail park for shopping and Finsbury Park for leisurely needs. Harringay Green Lanes and Harringay train station are also local for access to London Overground and National Rail.

Features

- Newly Refurbished
- Private Garden
- Two Bedrooms
- Leasehold
- Great Amenities
- Close to Green Space

Endymion Road, London, N4



Total area (approx.): 93.7 sq. m (1008.5 sq. ft)