



## Woodberry Grove, N4

£700,000

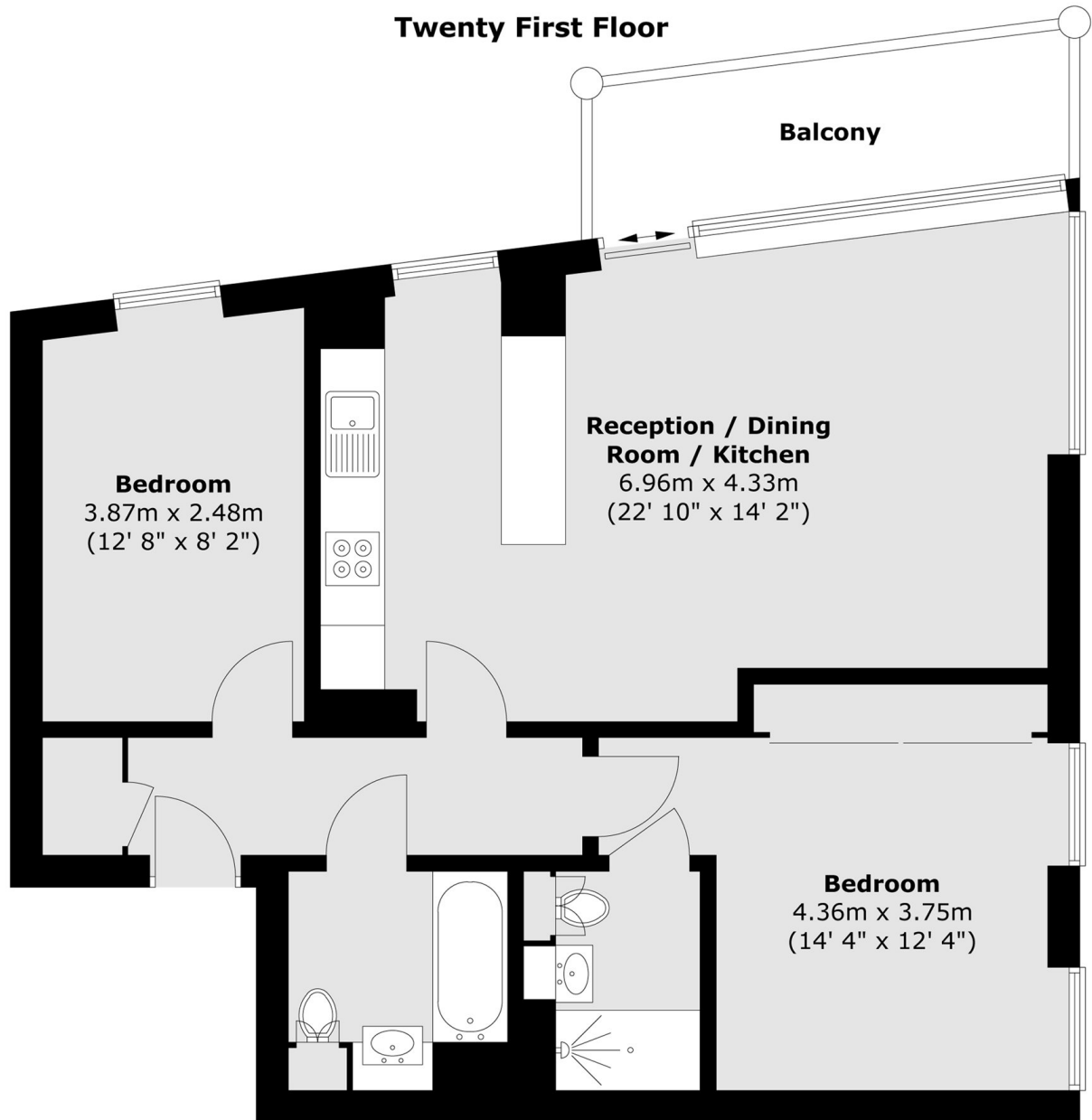
A two double bedroom apartment set on the 21st floor of Residence Tower, within the highly sought after Woodberry Down development, benefiting from a private balcony and impeccable views.

Close to excellent transport links with Manor House Station (Picadilly line) 0.2m away. The local area provides a nature reserve and parks, along with an array of local shops, cafes and restaurants to enjoy.

### Features

- Private Balcony
- Amazing Views
- Two Double Bedrooms
- Bike Storage
- Two Bathrooms
- 24hr Concierge

Woodberry Grove,  
London, N4



Total area (approx.) : 68.1 sq. m (733 sq. ft)  
Total balcony area (approx.) : 13.9 sq. m (150 sq. ft)