



## Monsell Road, N4

£800,000

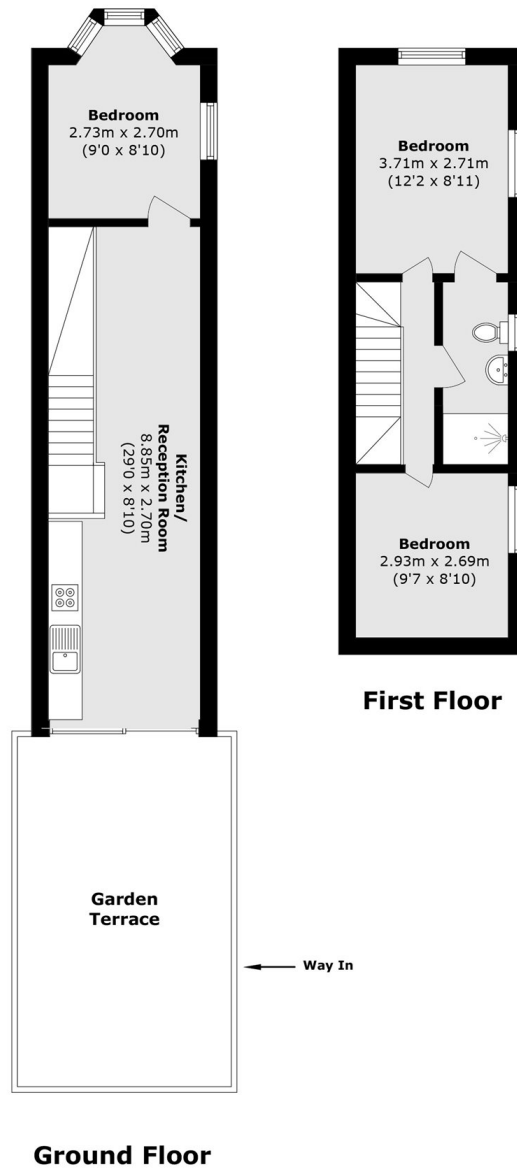
A rare opportunity to acquire a three bedroom end of terrace Victorian house, arranged over two floors and featuring a private south east facing patio garden. The property offers open plan living and is available chain free.

Monsell Road is a tree lined residential road, ideally located with access to the local shops & cafes Finsbury Park and Highbury have to offer. Finsbury Park station (Victoria Line & Piccadily Line) is within walking distance.

### Features

- Freehold
- Three Bedroom
- Private Garden
- Chain Free
- Residential Road
- Great Transport Links

# Monsell Road, London, N4



Total area (approx.): 59.9 sq. m (644.7 sq. ft)  
Garden Terrace Total (approx.): 23.6 sq. m (254.0 sq. ft)