



Mount Pleasant Villas, N4

£1,800,000

Dexters



Mount Pleasant Villas, N4

A substantial semi-detached family home offering five bedrooms, two reception rooms and a spacious open plan kitchen/dining area. The property further benefits from an expansive rear garden.

On the ground floor, the property opens into a welcoming entrance hall leading through to a reception room with a charming bay window. To the rear, an impressive open plan kitchen and dining room spans the width of the house, providing direct access to the garden. A separate utility room and a guest cloakroom complete this level.

The first floor comprises three well-sized double bedrooms and a family bathroom. The principal bedroom benefits from particularly generous proportions, while the additional rooms offer flexibility for family living or home working. Occupying the top floor is two additional bedrooms, a bathroom, office space on the landing and useful eaves storage.

Mount Pleasant Villas is a quiet, residential street, perfectly positioned close to Finsbury Park station as well as an array of independent shops and restaurants that the area has to offer.

Features

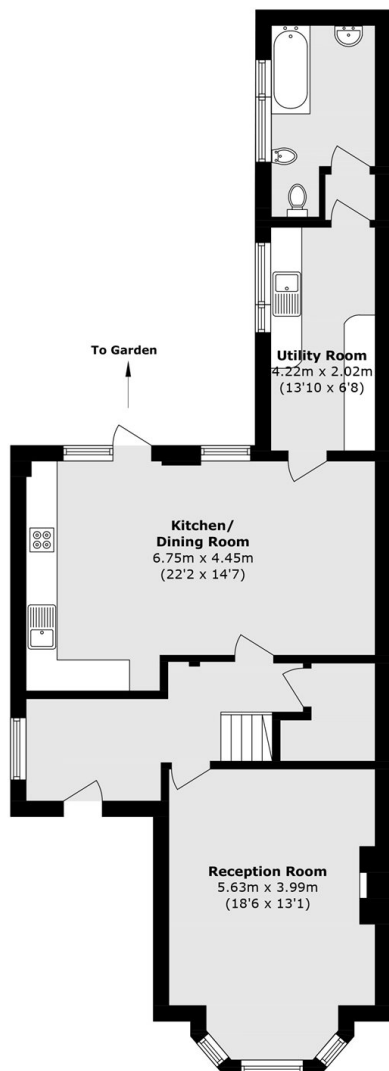
- Semi-Detached
- South Facing Garden
- Five Bedrooms
- Freehold
- Period Features
- Great Transport Links



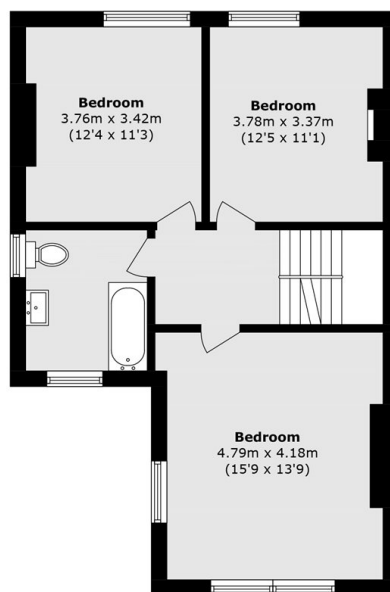




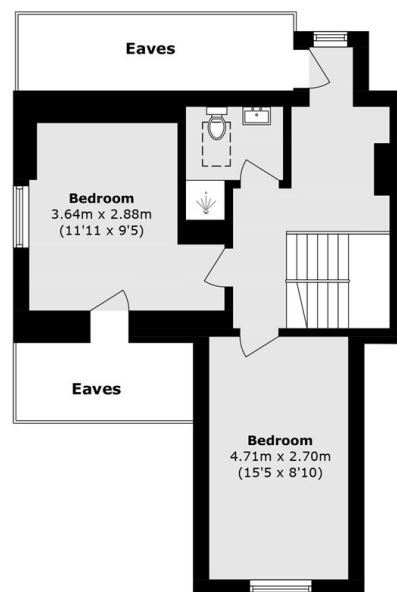
Mount Pleasant Villas, London, N4



Ground Floor



First Floor



Second Floor

Total area (approx.): 184.3 sq. m (1983.8sq. ft)
(Excluding Eaves)