



## Medina Road, N7

£550,000

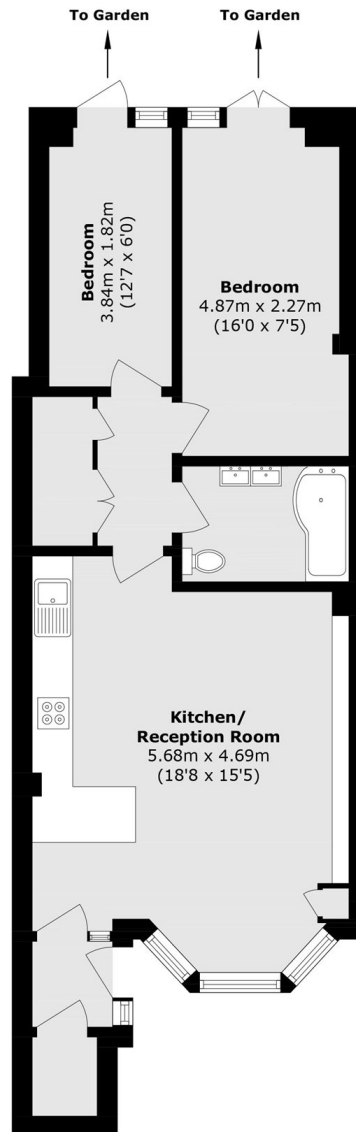
A very well-presented two bedroom garden apartment situated on a tree lined residential street. This property offers a private entrance and open plan living. Both bedrooms provide direct access to the private garden.

Medina Road offers easy access to local amenities, transport links, and green spaces found at Finsbury Park and Blackstock Road. Local shops, cafés, and restaurants are all within close distance of the property.

### Features

- Two Bedrooms
- Private Entrance
- Private Garden
- Open Plan Living
- Residential Street
- Great Transport Links

# Medina Road, London, N7



## Lower Ground Floor

Total (approx.): 58.2 sq. m (626.4 sq. ft)