



## Hornsey Road, N19

£585,000

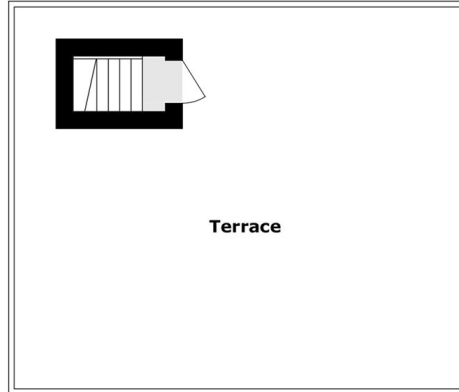
A charming two double bedroom Victorian conversion featuring a private roof terrace. This well-presented property offers a spacious open plan kitchen and reception area and is being sold chain free.

This property is a 15 minute walk from Finsbury Park station (Victoria line, Picadilly line and Thameslink), Archway station (Northern line), and Holloway Road. The property also benefits from a variety of amenities nearby.

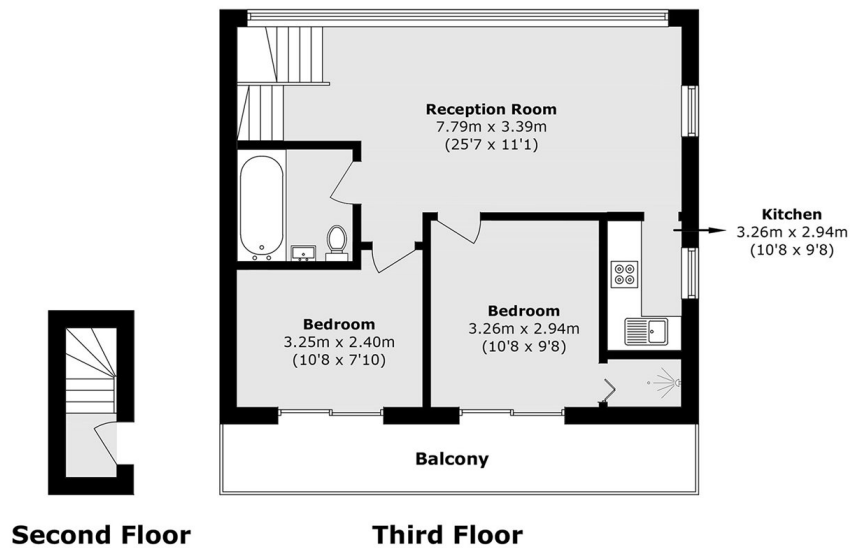
### Features

- Share of Freehold
- Two Bedrooms
- Private Roof Terrace
- Open Plan Living
- Chain Free
- Great Transport Links

# Hornsey Road, LONDON, N19



**Fourth floor**



**Second Floor**

**Third Floor**

Total area (approx.): 54.3 sq. m (584.4 sq. ft)  
Balcony area (approx.): 52.8 sq. m (468.3 sq. ft)  
Terrace area (approx.): 9.6 sq. m (103.3 sq. ft)