



## Tollington Park, N4

£3,600 Per calendar month

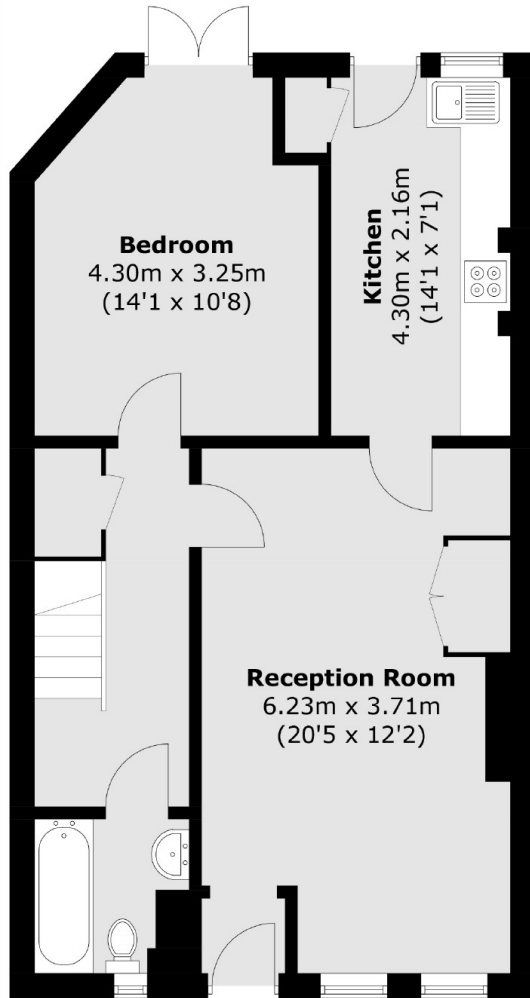
A lovely three double bedroom, split level maisonette with its own entrance and sole use of a South facing garden. Offered in very good decorative order the spacious flat has a large reception room, separate kitchen and modern bathroom suite

Located on Tollington Park and within easy reach of the local shops and cafes on both Stroud Green and Hornsey Road. Finsbury Park underground station is a short distance away for access to Victoria, Piccadilly and mainline services.

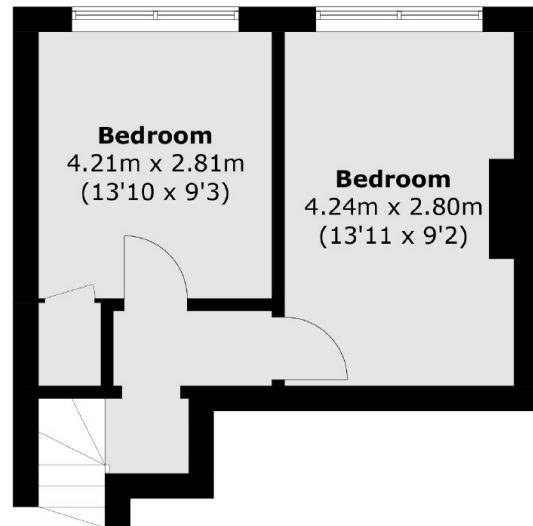
### Features

- Three Double Bedrooms
- Private Garden
- Private Entrance
- Great Location
- Great Transport Links
- Available End of July

# Tollington Park, London, N4



**Ground Floor**



**First Floor**

Total area (approx.): 87.5 sq. m (941.8 sq. ft)