



**Stapleton Hall Road, N4**

**£1,895,000**

**Dexters**



## Stapleton Hall Road, N4

A striking double-fronted Victorian terraced home, coming to the market for the first time in over 40 years. Offering five double bedrooms, three reception rooms. A spacious kitchen opens directly onto a sun-filled south-west facing garden, completing this exceptional family home.

An impressive entrance hall leads to a through reception room with dividing doors, original fireplaces, a bay window and stained-glass French doors opening onto the private garden. There is also a third reception room, spacious kitchen, utility room, WC, and a substantial cellar with its own front entrance, ideal for storage and bicycles.

The first floor comprises four double bedrooms and a family bathroom, including a generous principal bedroom with original period features. The top floor is arranged as a self-contained annex with a large bedroom and en suite facilities.

Stapleton Hall Road is superbly located in Stroud Green, moments from Harringay Station and close to Finsbury Park (Victoria, Piccadilly and Thameslink services). Nearby Harringay Village offers popular cafés and independent shops, while Oxford Circus can be reached in approximately 16 minutes.

### Features

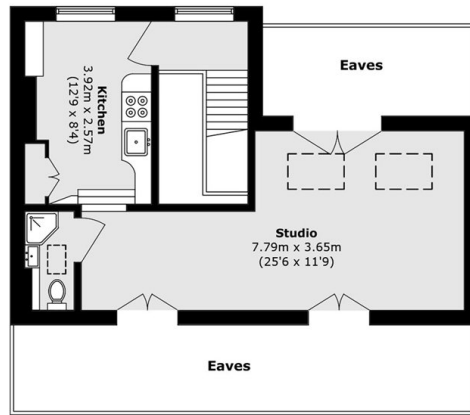
- Freehold
- Five Bedrooms
- Two Receptions
- Private Garden
- Premium Location
- Over 2,500 Sqft



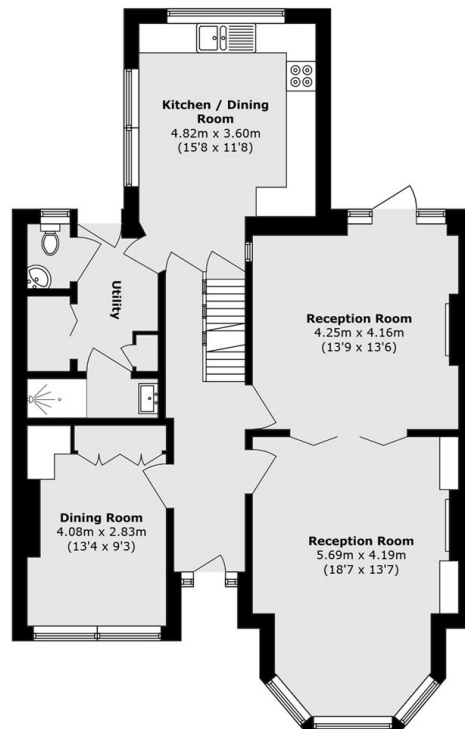




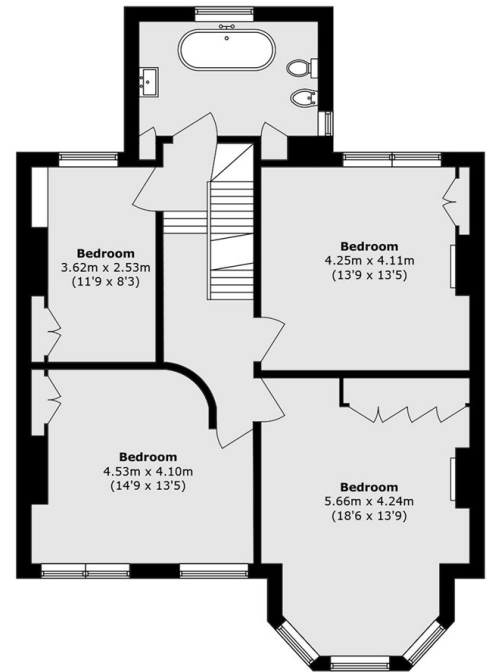
# Stapleton Hall Road, London, N4



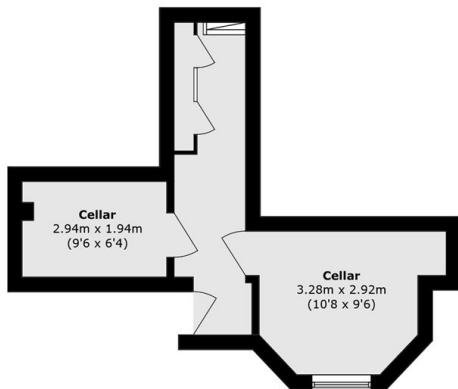
**Second Floor**



**Ground Floor**



**First Floor**



**Basement**

Total area (approx.): 244.9 sq. m (2636.1 sq. ft)  
(Excluding Eaves)