



## Daneland Walk, N17

£600,000

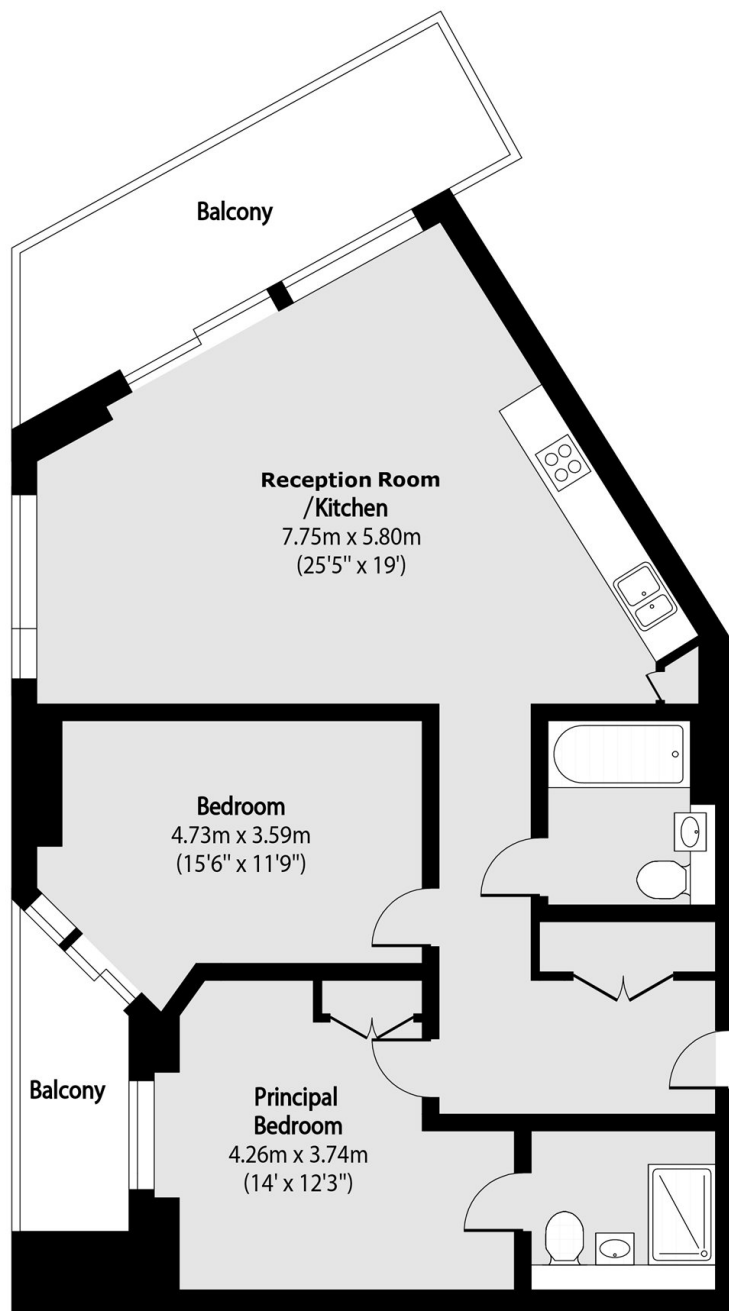
A modern apartment in one of Tottenham Hale's most desirable developments. Boasting great views across the London skyline, the property offers two double bedrooms, a spacious open plan layout, and two private balconies.

Hale Works has excellent links to the rest of London with Kings Cross only 4 stops on the Victoria Line and direct trains to Stanstead Airport with National Rail. Tottenham Hale Tube is a 2 minute walk away from Hale Works.

### Features

- Two Bedroom
- Turnkey
- 24 Hour Concierge
- Private Balconies
- Excellent Transport Links
- Stunning Views

# Daneland Walk, London, N17



Total area (approx): 81.31 sq m (875 sq. ft)

Balcony total area (approx): 15.33 sq m (165 sq. ft)