



Tollington Park, N4

£400,000

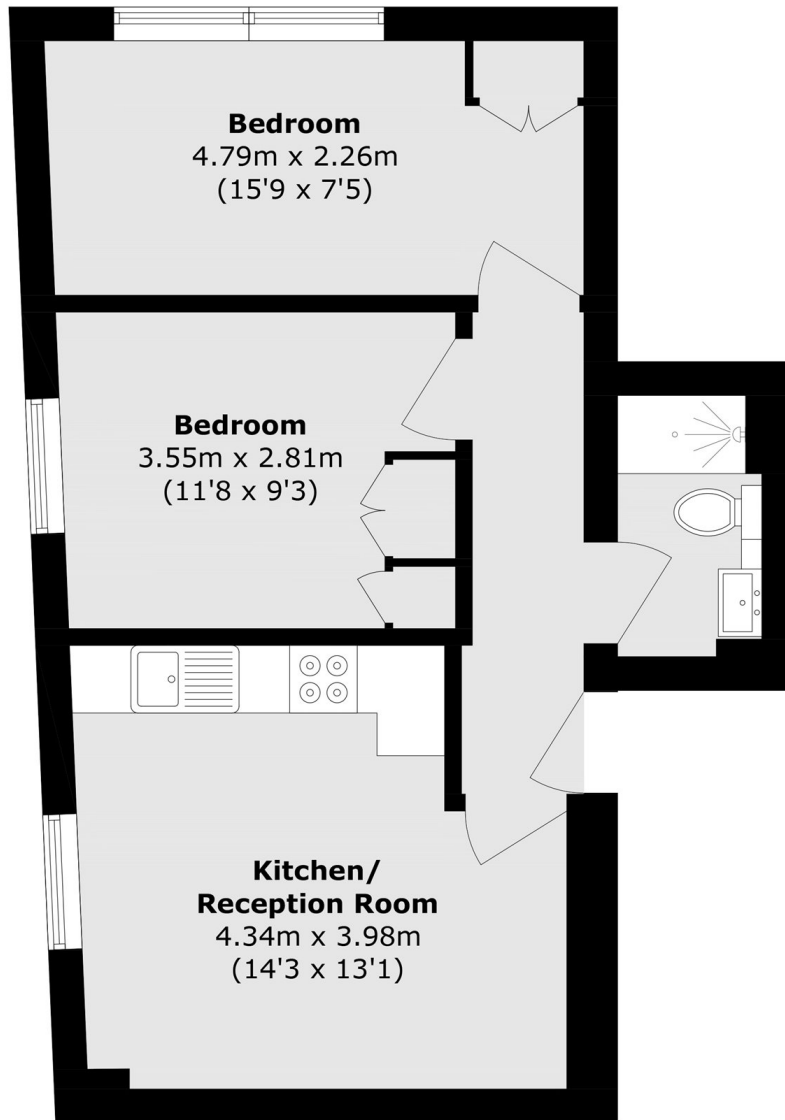
A well presented two double bedroom apartment set on the third floor. The property features a spacious open plan living and kitchen area, two double bedrooms and a modern bathroom.

Plough Apartments is ideally located on Tollington Park, providing easy access to excellent transport links to the City and West End from Finsbury Park underground station, just 0.8 miles away.

Features

- Leasehold
- Two Double Bedrooms
- Open Plan Living
- Third Floor
- Chain Free
- Great Transport Links

Tollington Park, London, N4



Total area (approx.): 46.4 sq. m (499.4 sq. ft)