

## Point Wharf Lane, TW8

£483 Per week

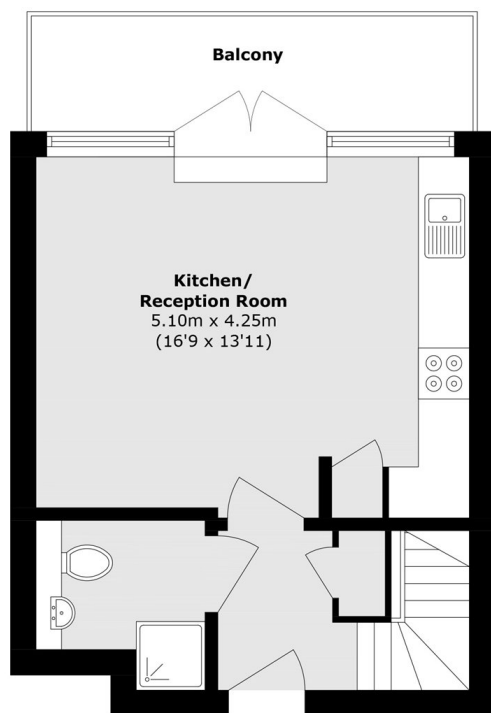
A spacious and bright two double bedroom two-bathroom apartment with an open-plan kitchen, a private balcony overlooking the communal gardens and River Thames and allocated parking.

Goat Wharf is a highly regarded riverside development with restaurants on-site and with Brentford High Street and Brentford station nearby.

### Features

- Two Double bedrooms
- Two Bathrooms
- Open-Plan Kitchen
- Direct River Views
- Private Balcony
- Allocated Parking

# Point Wharf Lane, Brentford, TW8



**Fourth Floor**



**Fifth Floor**

Total area (approx.): 86.1 sq. m ( 926.8 sq. ft)  
Balcony area (approx.): 7.1 sq. m (76.4 sq. ft)