



## The Village, SE7

### £475,000

A spacious and contemporary three bedroom top floor apartment situated in the heart of Charlton Village, offering over 1,400 sq ft of accommodation. Set on the top floor of a charming period building, this impressive property enjoys an abundance of natural light and far-reaching views. This flat also comes with access to a communal garden.

Excellent transport links nearby with Charlton station minutes away and a short bus ride to Woolwich Arsenal offering swift connections to the City and Canary Wharf via the DLR, Thameslink, and Elizabeth Line.

### Features

- Top Floor Apartment
- Three Double Bedrooms
- Bright Reception With Views
- Period Charm & High Ceilings
- Excellent Transport Links
- Communal Garden



## The Village, SE7

The generous layout comprises a large and bright reception room, a separate kitchen, three double bedrooms, and a family bathroom. High ceilings and large windows enhance the sense of space, while the versatile floor plan provides scope for home working or entertaining.

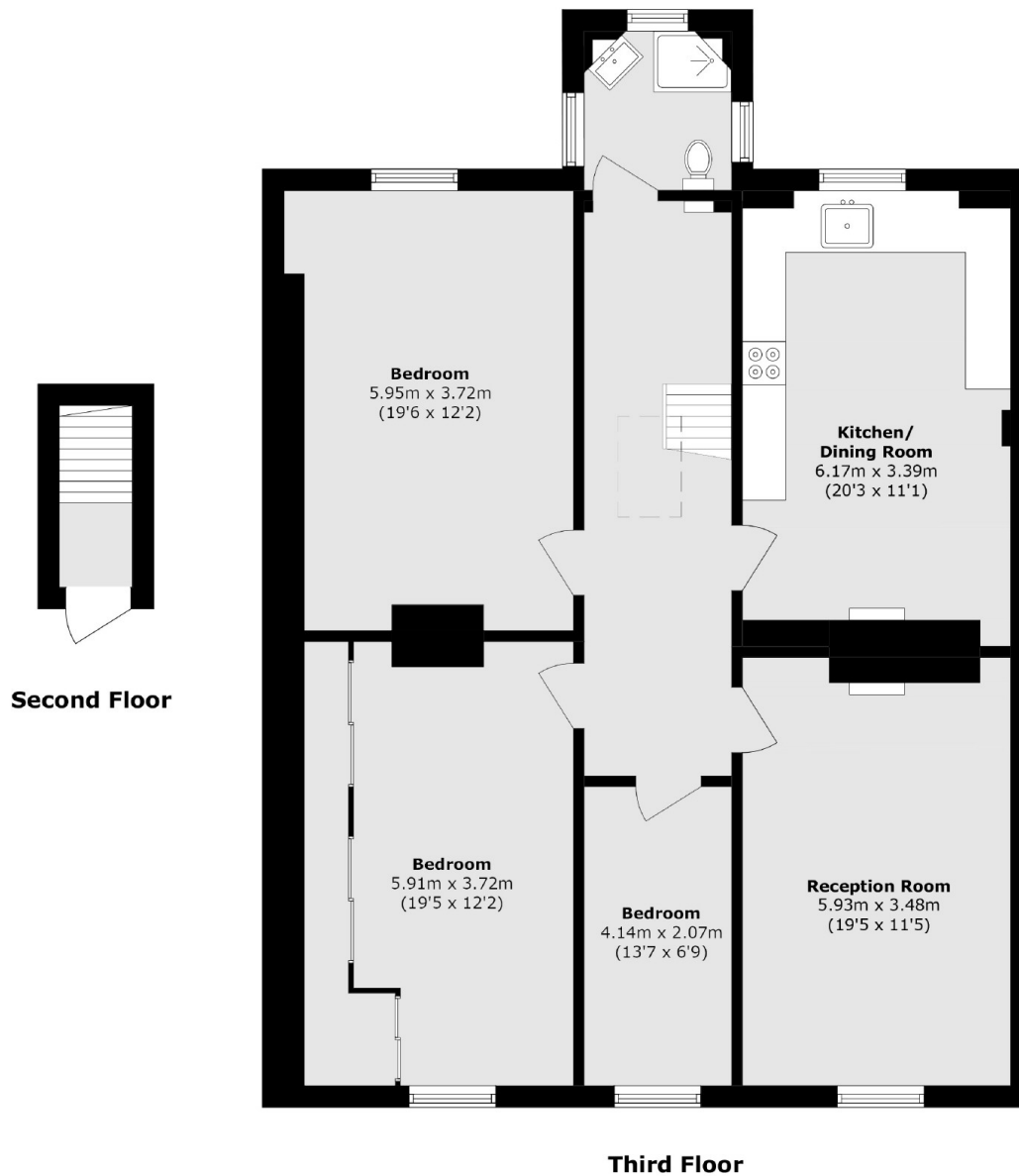
Perfectly positioned within the Charlton Village, you can enjoy a selection of local cafés, pubs, and iconic green spaces such as Charlton Park, all within walking distance. This property combines period charm with modern convenience, making it an ideal home for those seeking space, character and a prime location.







# The Village, London, SE7



Total area (approx.): 131.5 sq. m (1415.4 sq. ft)

## Dexters

Blackheath  
1 Stratheden Road  
London  
SE3 7SX  
Sales  
020 8815 2200

Energy Rating: E. We aim to make our particulars both accurate and reliable. However they are not guaranteed; nor do they form part of an offer or contract. If you require clarification on any points then please contact us, especially if you're traveling some distance to view. Please note that appliances and heating systems have not been tested and therefore no warranties can be given as to their good working order.

 **RICS** | Regulated  
Estate Agent  
and Letting Agent

[dexters.co.uk](https://www.dexters.co.uk)