



The Plantation, SE3

£850,000

Fabulous and larger than usual 'Span' house built by the famous architect Eric Lyons. This three bedroom end of terraced property retains many of the original features from the period and offers excellent light and space.

Situated on the much sought after Plantation development on the Cator Estate, a peaceful private estate on the edge of Blackheath Village.

Features

Situated On A Stunning Private Estate
Span House
Minutes To Blackheath Village
Three Bedrooms & A Study
Garage With Access
Modern & Bright



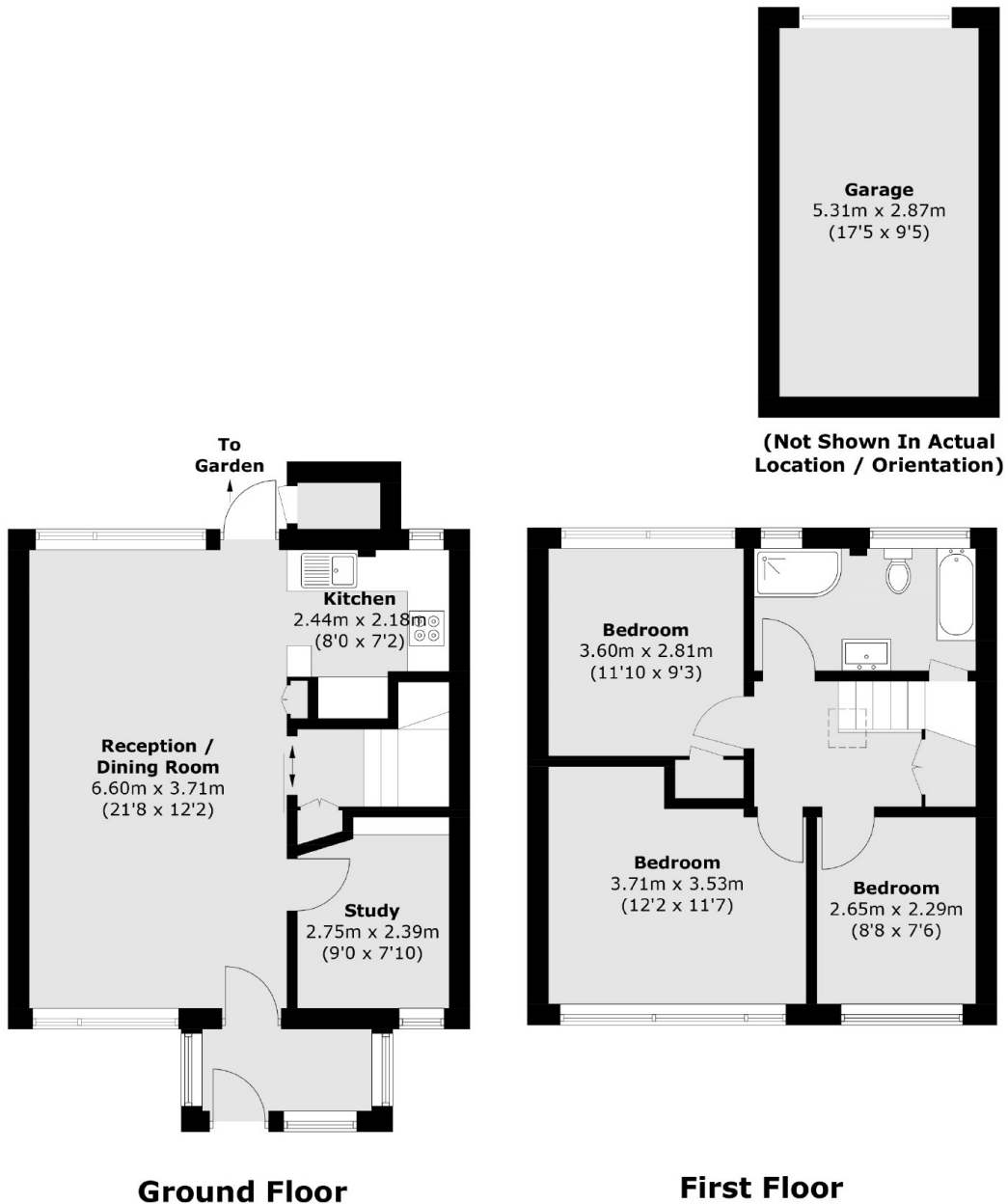
The Plantation, SE3

The ground floor has a large reception room with dual aspect windows, original parquet flooring and access to a study, and is open-plan to a modern, fitted kitchen with built in appliances and views over the rear garden.

Upstairs are three bedrooms and a large family bathroom. The rear garden has been landscaped by the current owners and has the benefit of access to the garage and access to parking at the rear.



The Plantation, London, SE3



Total area (approx.): 84.0 sq. m (904.2 sq. ft)
Garage: 15.2 sq. m (163.6 sq. ft)
External Cupboard: 0.8 sq. m (8.6 sq. ft)

Dexters

Blackheath
1 Stratheden Road
London
SE3 7SX
Sales
020 8815 2200

Energy Rating: E. We aim to make our particulars both accurate and reliable. However they are not guaranteed; nor do they form part of an offer or contract. If you require clarification on any points then please contact us, especially if you're traveling some distance to view. Please note that appliances and heating systems have not been tested and therefore no warranties can be given as to their good working order.

 **RICS** | Regulated
Estate Agent
and Letting Agent

dexters.co.uk