



Mayhill Road, SE7

£800,000

Dexters are delighted to present this stunning three-bedroom terraced Victorian house on Mayhill Road, offering a seamless blend of period charm and contemporary finishes throughout.

Situated on one of Charlton's most sought-after roads, this home sits within the catchment area for several highly regarded primary schools and an outstanding secondary school. Both Charlton and Westcombe Park stations are close by, offering swift links into the City, while the Jubilee Line is easily accessible. The shops and cafés of the Royal Standard and the open green spaces of Greenwich Park are also just a short stroll away.

Features

- Three Bedrooms
- Beautifully Finished
- Sought After Location
- Victorian Terrace
- Chain Free
- Potential to Extend (STPP)



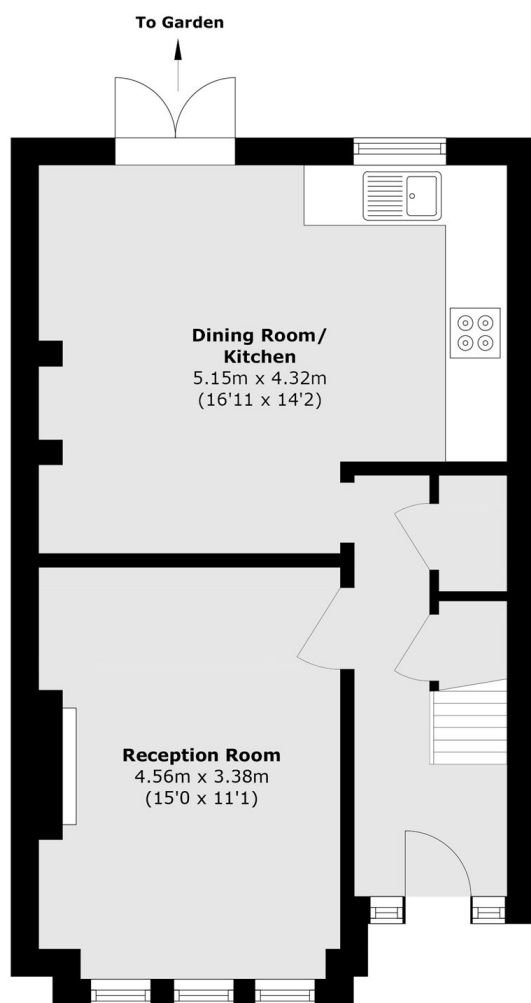
Mayhill Road, SE7

Having been refurbished to an exceptional standard, the property provides a stylish and turnkey family home moments from the green open spaces and village atmosphere of Blackheath. Arranged over two floors, the house features a bright and spacious double reception with restored period detailing, a newly fitted kitchen finished with sleek modern units and integrated appliances, and direct access to a private rear garden perfect for entertaining or relaxing.

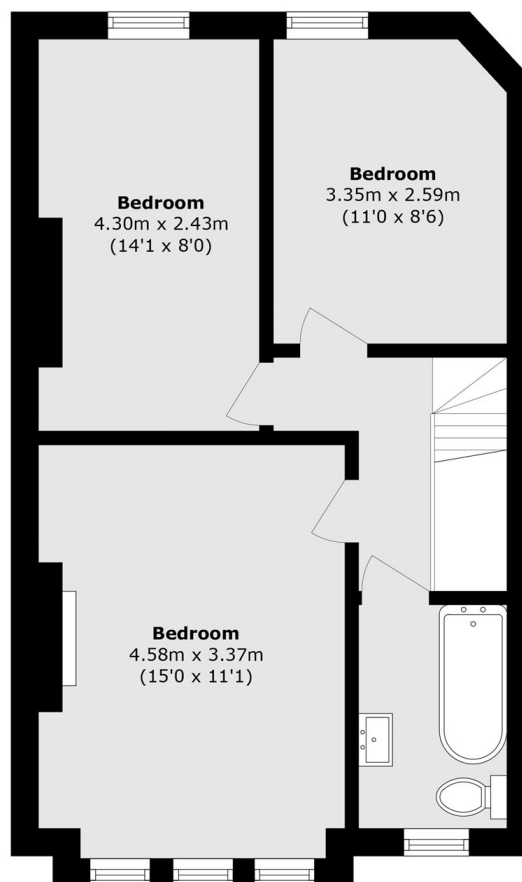
Upstairs, there are three well-proportioned bedrooms and a beautifully presented family bathroom, all finished to a high specification. The refurbishment has been carried out with great attention to detail, creating a warm and inviting home while maintaining the classic Victorian character.



Mayhill Road, London, SE7



Ground Floor



First Floor

Total area (approx.): 89.6 sq. m (964.4 sq. ft)