

## Victory Parade, SE18

### £499,950

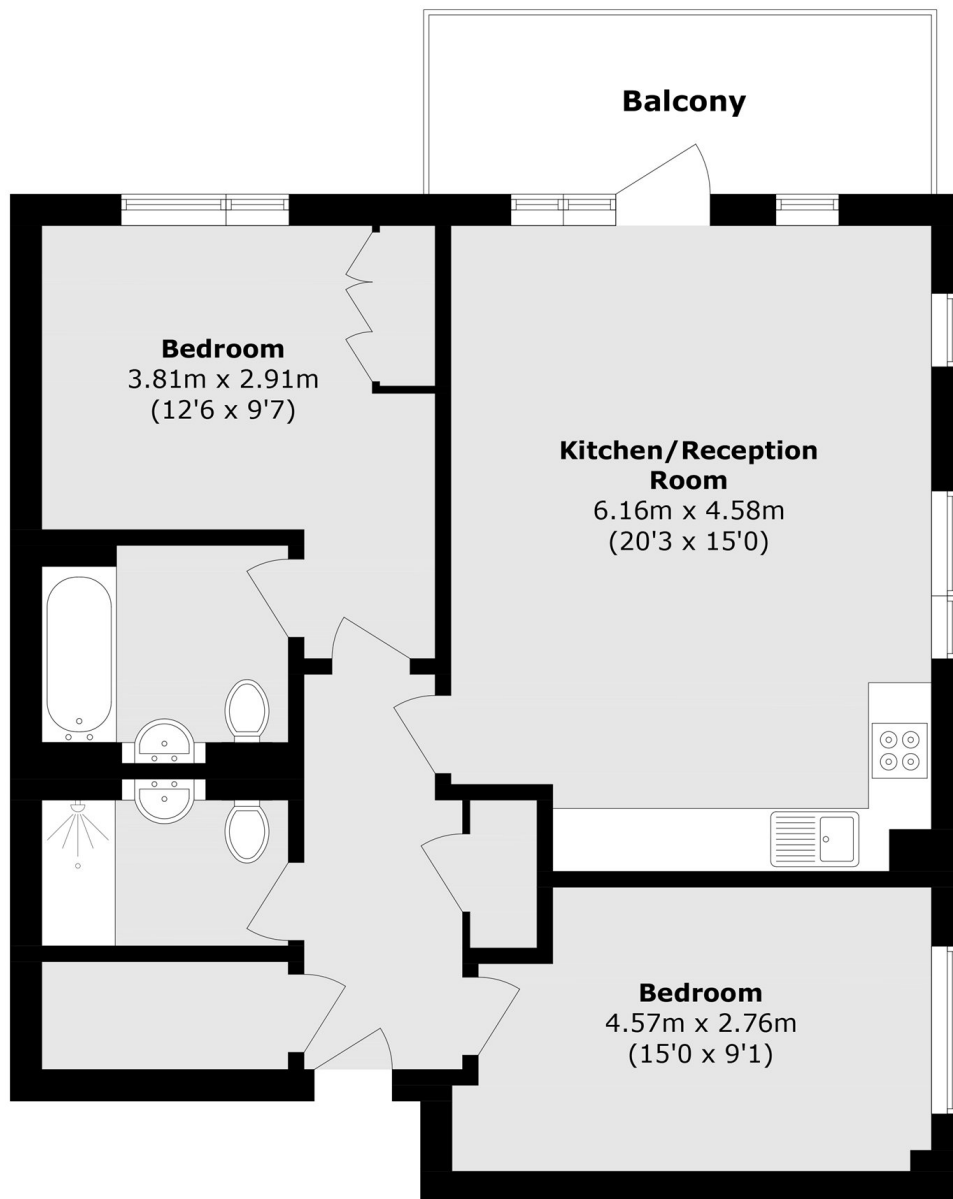
A beautifully presented two bedroom, two bathroom apartment positioned on the eighth floor of the popular Compton House, SE18, offering far-reaching views and an abundance of natural light. The property features a spacious open plan reception room with a dual aspect that floods the space with natural light throughout the day. The living area flows seamlessly onto a private balcony, providing stunning elevated views across Shooter's Hill and the surrounding landscape. The modern kitchen is well-appointed and thoughtfully designed to complement the open living space. Both bedrooms are well-proportioned, with the principal bedroom benefitting from a sleek en suite bathroom. A further contemporary family bathroom serves the second bedroom.

Compton House is superbly positioned in a prime Woolwich location, just minutes from a wide array of local amenities including shops, cafés, restaurants and leisure facilities. Woolwich Station and Woolwich Arsenal are both within easy reach, providing outstanding transport links via the Elizabeth Line, DLR and National Rail, allowing for swift and direct access into Canary Wharf, the City and Central London.

### Features

- Private Balcony
- Chain Free
- Two Double Bedrooms
- Minutes Away From Woolwich Station
- Private Secure Parking
- Concierge and Gym
- Accessibility

# Victory Parade, London, SE18



Total area (approx.): 74.7 sq. m (804 sq. ft)