



Moordown, SE18

£750,000

An impressive four bedroom end of terrace house, offered to the market chain free and benefiting from a separate garage.

Located on a sought-after road near Oxleas Woods, the property is within catchment for outstanding schools including Christchurch Primary and Harris Academy. Regular bus links provide easy access to Blackheath Village, Woolwich (Elizabeth Line & DLR), Welling, and Bexleyheath.

Features

- End Of Terrace
- Chain Free
- Garage
- Views Of London's Skyline
- Four Bedrooms
- Off Street Parking



Moordown, SE18

The property has been extended to the side, creating generous and well-balanced living accommodation throughout. Internally, the home offers four well-proportioned bedrooms alongside flexible living space ideal for family life.

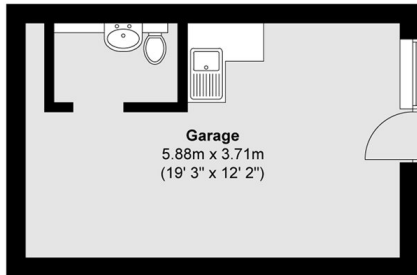
One of the standout features is the stunning elevated views across London, providing a fantastic outlook and a real sense of space and light.

Located in a sought-after residential area, this chain-free home presents an excellent opportunity for buyers looking for a well-sized property with scope to personalise, while benefiting from excellent views and practical features including a separate garage.

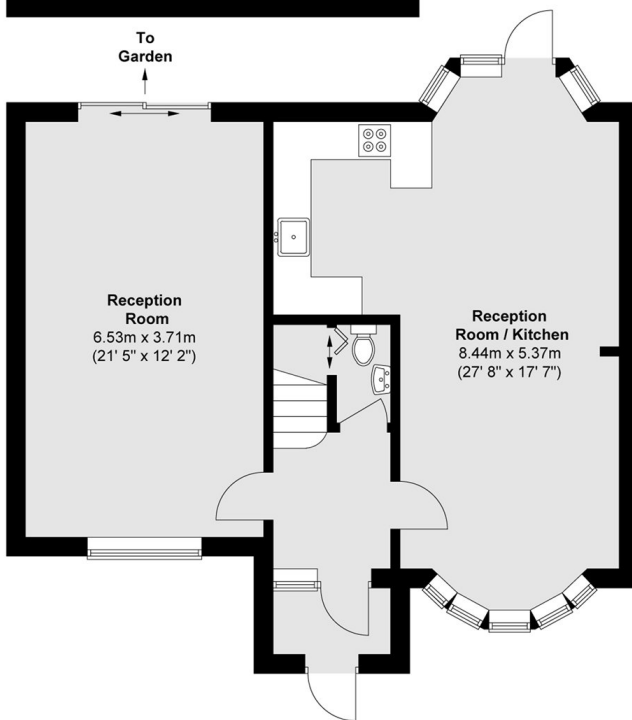


Moordown, London, SE18

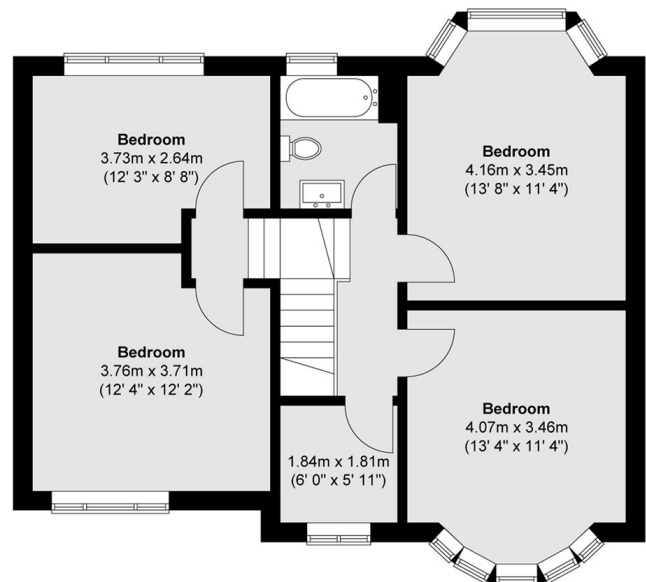
Ground Floor



To
Garden



First Floor



Total area (approx.) : 136.2 sq. m (1466 sq. ft)
Total garage area (approx.) : 22 sq. m (237 sq. ft)

Dexters

Blackheath
1 Stratheden Road
London
SE3 7SX
Sales
020 8815 2200

Energy Rating: . We aim to make our particulars both accurate and reliable. However they are not guaranteed; nor do they form part of an offer or contract. If you require clarification on any points then please contact us, especially if you're traveling some distance to view. Please note that appliances and heating systems have not been tested and therefore no warranties can be given as to their good working order.

 **RICS** | Regulated
Estate Agent
and Letting Agent

dexters.co.uk