



Springfield Grove, SE7

£375,000

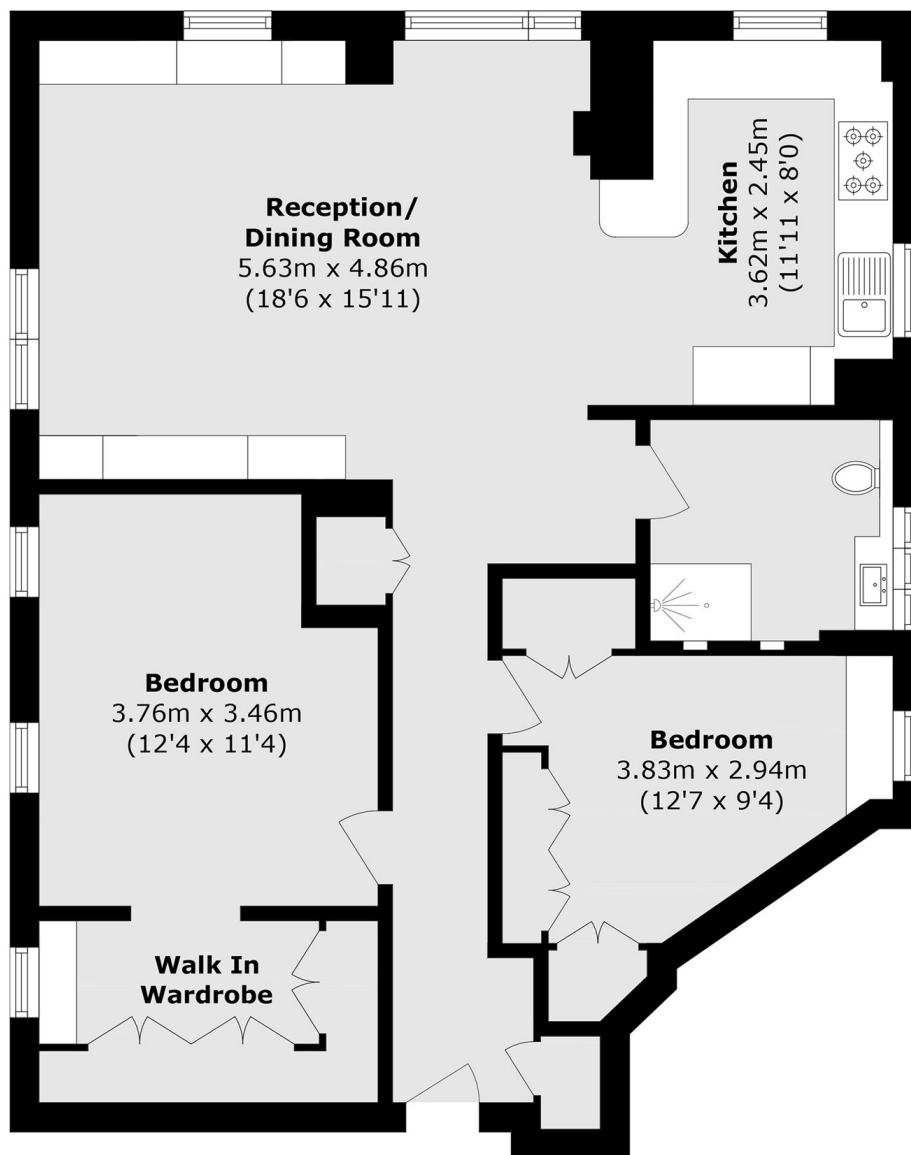
Located on the 5th floor, this impressive two-bedroom apartment offers approximately 915 sq ft of well-proportioned living space and enjoys stunning panoramic views across London. Both bedrooms are generous double rooms, with the principal bedroom benefiting from a walk-in wardrobe, while the second bedroom features built-in wardrobes. The apartment also boasts a large, modern bathroom complete with a walk-in shower, finished to a high standard. The spacious open-plan kitchen and reception room forms the heart of the home and is perfect for entertaining. Flooded with natural light, this fantastic living space makes the most of the elevated position and breathtaking views. Further benefits include parking within the development and the property is offered chain free.

Situated in a fantastic location for transport, including Charlton Station and for bus routes to both the Elizabeth Line and North Greenwich Jubilee Line. Close to superstores and local shops and within easy reach of both Blackheath Royal Standard and Greenwich Park.

Features

- Chain Free
- Stunning Views Over London
- Two Double Bedrooms
- Great Condition Throughout
- Close To Transport Links
- Walk In Wardrobe

Springfield Grove, London, SE7



Total area (approx.): 88.4 sq. m (915.5 sq. ft)