



Laboratory Square, SE18

£600,000

A beautifully presented Two Bedroom Georgian converted ground floor apartment, set within this impressive period building in the heart of the Royal Arsenal, benefiting from access to well-maintained communal gardens. The property offers elegant living space with high ceilings, large sash windows and a blend of original character with contemporary finishes, all within a sought-after riverside development. This property also comes with access to a an on-site 24-hour concierge, gymnasium, sauna, steam room, cinema and an underground parking space.

Features

Georgian Conversion
Two Bedroom
Ground Floor
Underground Parking
Communal Gardens
24 Hour Concierge and
Facilities

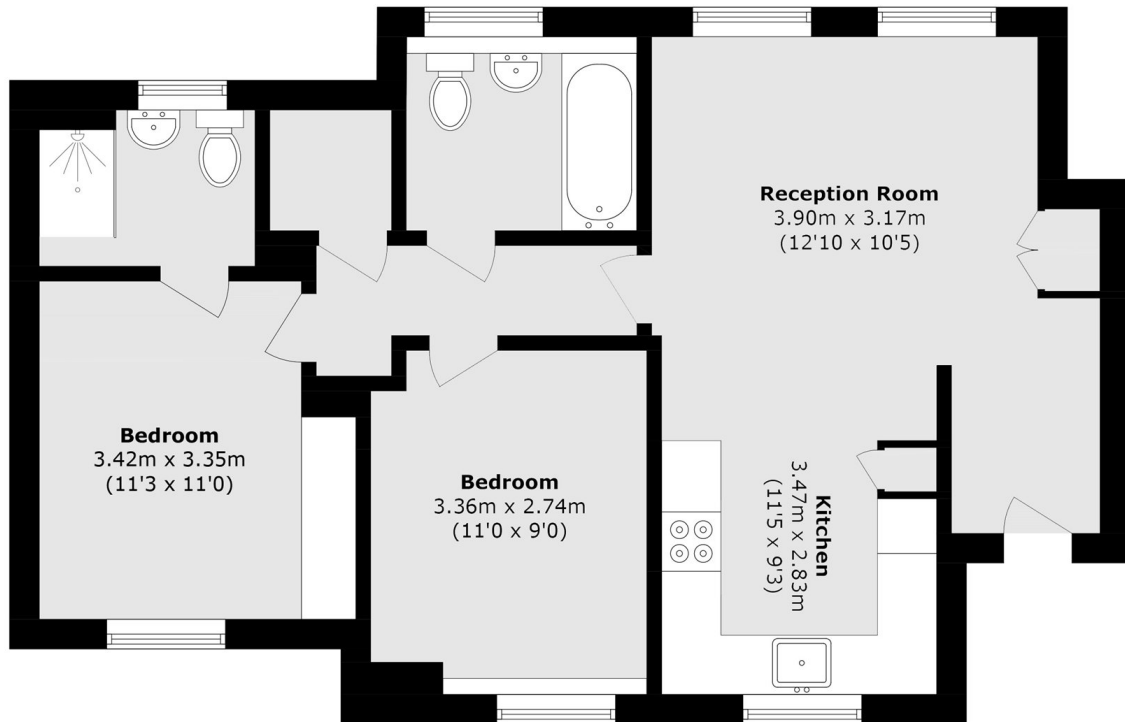


Laboratory Square, SE18

Situated in the Royal Arsenal, the property is ideally positioned for Woolwich Arsenal station, offering Elizabeth Line, DLR and National Rail services into Canary Wharf, the City and West End. The riverside Thames Path, local cafés, restaurants, gyms and shops are all moments away, while the open green spaces of Woolwich Common and the Thames Clipper river services are also within easy reach



Laboratory Square, London, SE18



Total area (approx.): 62.2 sq. m (669.5 sq. ft)