



Embleton Road, SE13

£600,000

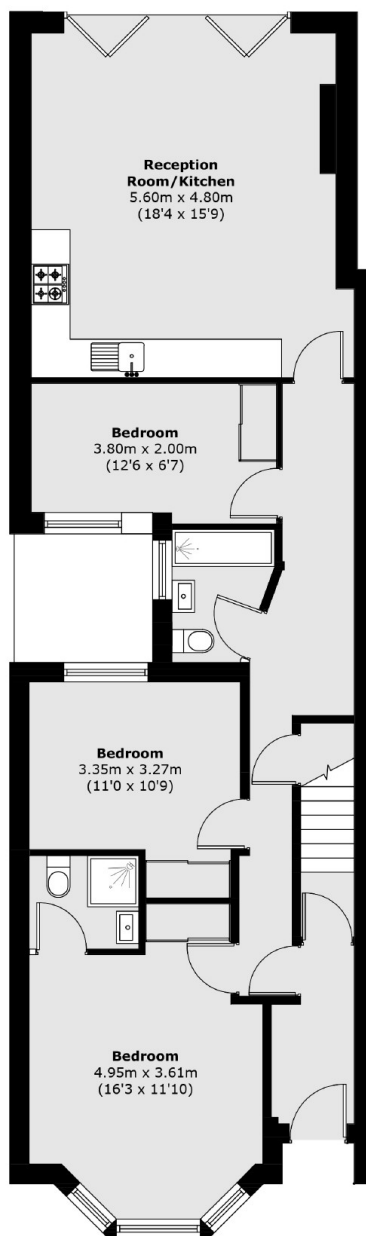
A beautifully restored, brand new three-bedroom ground floor apartment set within a handsome Victorian conversion. Finished to the highest standards, this spacious home features bespoke German Nobilia kitchens with stone worktops, and underfloor heating in the bathrooms. The open-plan kitchen and reception area opens onto a private garden. Offered with a share of freehold and no onward chain.

Embleton Road is a quiet, residential street nearby to popular Hilly Fields park and benefits from the local boutique shops, cafe's and restaurants of Ladywell and Brockley. Ladywell station is within easy reach and there are fast and frequent services into central London. In addition, you can walk to Lewisham DLR for quick and easy access into Canary Wharf.

Features

Guide Price £650,000-
£700,000
Three Bedrooms
Ground Floor
Private Garden
Share Of Freehold
Chain Free

Embleton Road, London, SE13



Total area (approx.): 83.1 sq. m (894.4 sq. ft)

Dexters

Brockley
369 Brockley Road
London
SE4 2AG
Sales
020 8815 2220

Energy Rating: D. We aim to make our particulars both accurate and reliable. However they are not guaranteed; nor do they form part of an offer or contract. If you require clarification on any points then please contact us, especially if you're traveling some distance to view. Please note that appliances and heating systems have not been tested and therefore no warranties can be given as to their good working order.

 **RICS** | Regulated
Estate Agent
and Letting Agent

[dexters.co.uk](https://www.dexters.co.uk)