

## Hither Green Lane, SE13

### £450,000

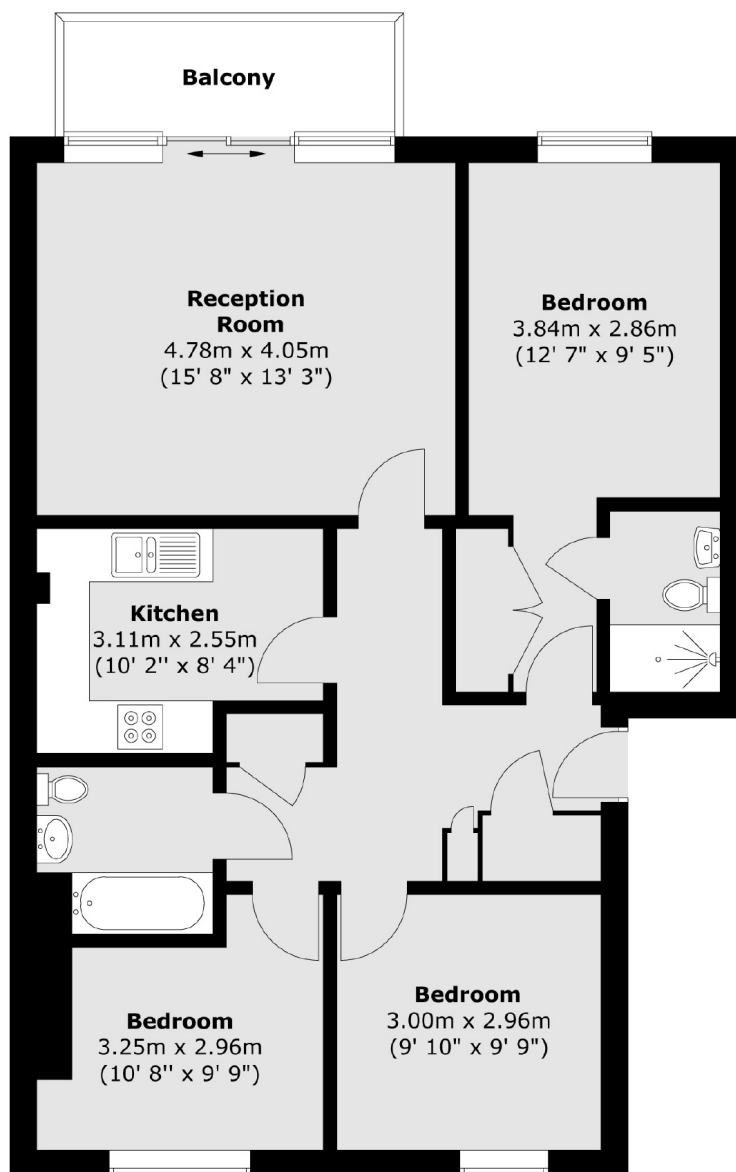
A generous three bedroom apartment situated within the popular Meridian South development. The spacious apartment comprises of a light filled reception, separate modern kitchen, three double bedrooms with master en-suite and further bathroom. Further benefits include an allocated parking space, on site gym, Tesco Express and excellent transport links. Offered chain free.

Meridian South is a sought after development well positioned for Hither Green station and close to Mountsfield Park.

### Features

- Large Reception Room
- Three Double Bedrooms
- Two Bathrooms
- Secure Underground Parking
- Chain Free
- Long Lease

# Hither Green Lane, London, SE13



Total area (approx.) : 80.2 sq. m (863 sq. ft)  
Total balcony area (approx.) : 4.9 sq. m (53 sq. ft)