



## Brownhill Road, SE6

£350,000

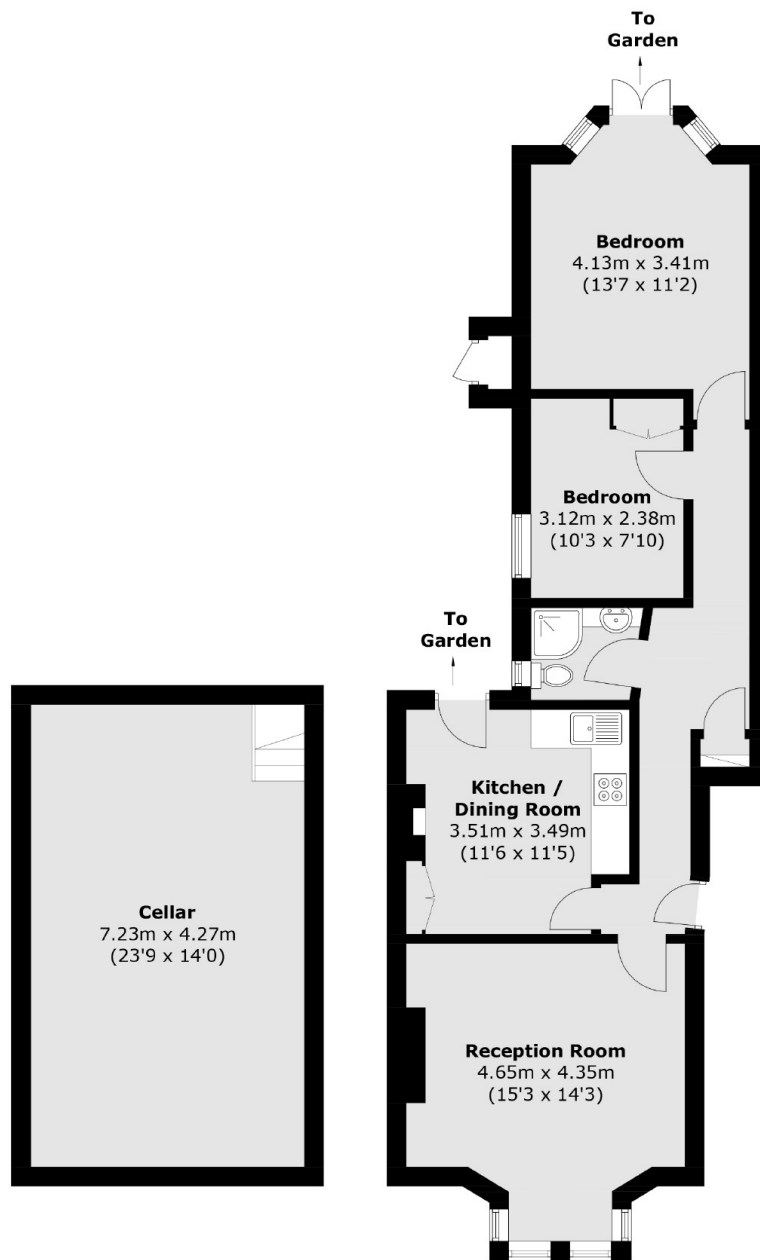
A large two double bedroom flat with a generous private rear garden set on the ground floor of a pretty Edwardian building. There is a paved front garden with potential for parking and offered with no onward chain.

Brownhill Road is ideally located for Hither Green and both Catford train stations along with the amenities of Rushey Green and Catford. The open space of Mountsfield Park is also accessed only a short distance along the road.

### Features

- Two Bedrooms
- Large Reception Room
- Garden Flat
- Period Conversion
- 1030 Sq Ft
- Long Lease

Brownhill Road,  
London, SE6



### Cellar

### Ground Floor

Approx Internal Area: 95.7 sq. m (1,030.1 sq. ft)  
(Excluding Eaves)

Outdoor Storage: 0.4 sq. m (4.3 sq. ft)

Total: 96.1 sq. m (1,034.4 sq. ft)

**Dexters**

Brockley  
369 Brockley Road  
London  
SE4 2AG  
Sales  
020 8815 2220

Energy Rating: C. We aim to make our particulars both accurate and reliable. However they are not guaranteed; nor do they form part of an offer or contract. If you require clarification on any points then please contact us, especially if you're traveling some distance to view. Please note that appliances and heating systems have not been tested and therefore no warranties can be given as to their good working order.

**RICS** Regulated  
Estate Agent  
and Letting Agent

dexters.co.uk