



Sevenoaks Road, SE4

£625,000

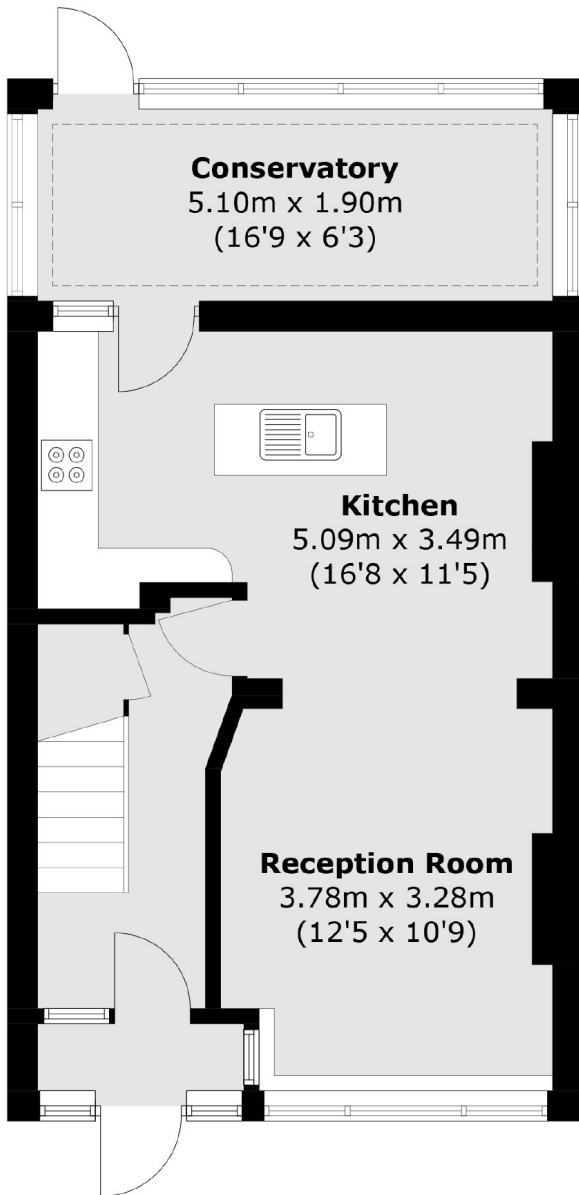
Offered with no onward chain, this three bedroom 1930's home is fantastic for any growing family. There is a bright and spacious open-plan reception/dining room, a modern kitchen with island, a generous rear garden and the added benefit of off street parking.

Sevenoaks Road is located close to Crofton Park station offering direct links into Blackfriars, Victoria and St. Pancras. In addition, Brockley and Ladywell stations are all within easy reach for services into London and the City.

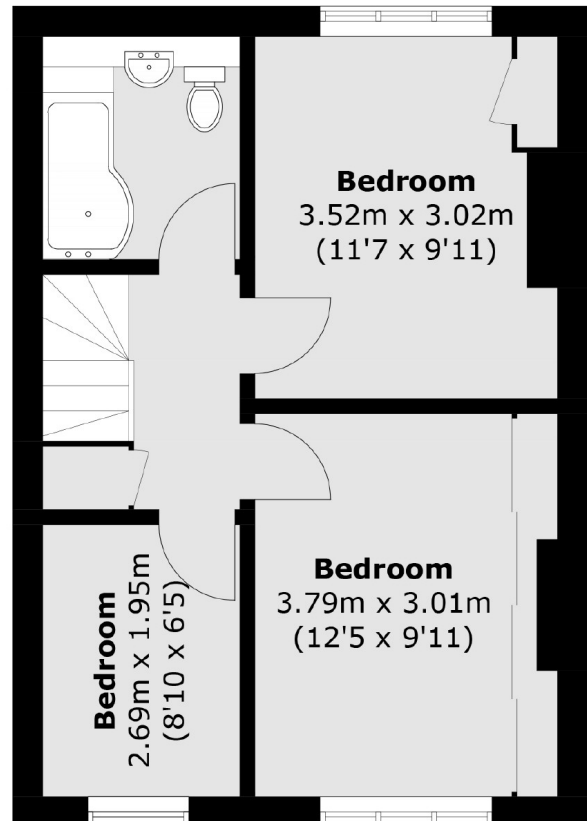
Features

- Three Bedrooms
- Open Plan Living
- Modern Kitchen
- Off Street Parking
- Close To Transport
- Chain Free

Sevenoaks Road, London, SE4



Ground Floor



First Floor

Total area (approx.): 88.0 sq. m (947.2 sq. ft)