



Adelaide Avenue, SE4

£700,000

Set within the highly sought-after Brockley Conservation Area and within short walking distance to Hilly Fields, this elegant Victorian home blends timeless character with contemporary comfort across two spacious floors.

Perfectly placed for Ladywell and Brockleys vibrant cafés, delis and independent shops, and within easy reach of Ladywell, Brockley and Crofton Park stations, this is a rare opportunity to own a spacious, character-filled home in one of South East London's most desirable locations.

Features

- Three Bedrooms
- Share Of freehold
- Private Section Of Garden
- Period Features
- Split Level
- Good Transport Links

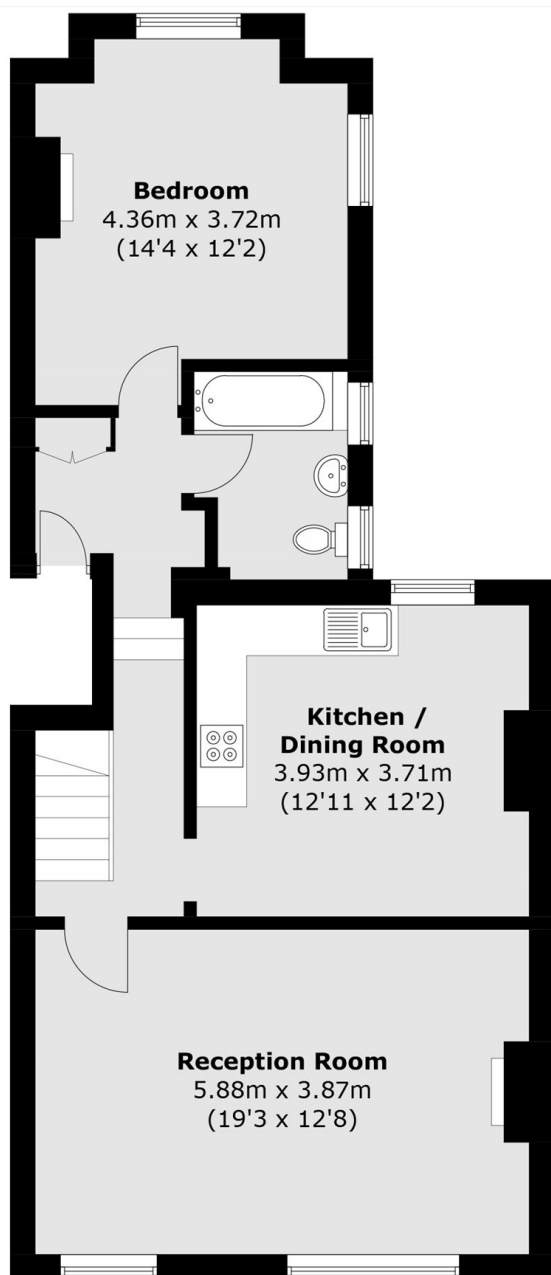


Adelaide Avenue, SE4

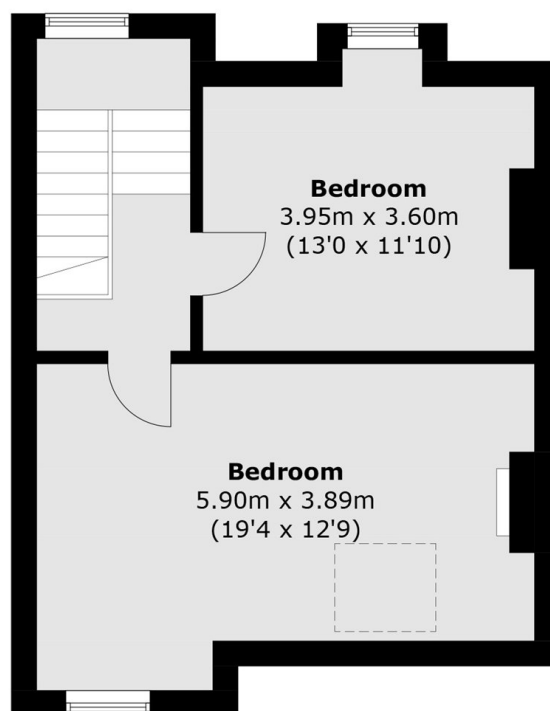
Inside, a generous reception room showcases high ceilings, period fireplaces and elegant original detailing, creating a warm and inviting space for relaxing or entertaining. The spacious eat-in kitchen combines classic style with modern practicality, perfect for family life and gatherings. Three generously sized bedrooms and a contemporary bathroom provide comfort and versatility throughout. To the rear, a private section of garden provides a peaceful outdoor retreat surrounded by mature planting.



Adelaide Avenue, London, SE4



First Floor



Second Floor

Total area (approx.): 109.7 sq. m (1,180.8 sq. ft)