



## Vicars Hill, SE13

### £800,000

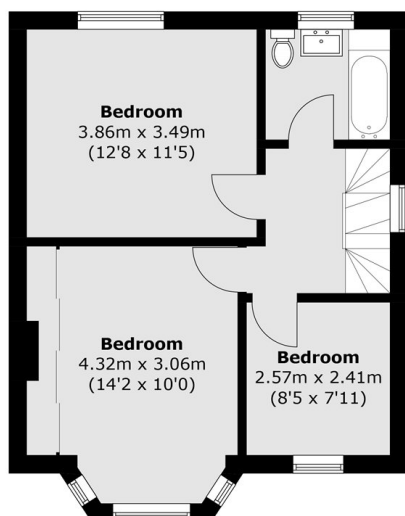
Favourably set moments from Hilly Fields this five bedroom family home offers incredible potential with no onward chain. This home offers a generous reception room and separate dining room, a large basement and private rear garden.

Vicars Hill is a prime residential road located moments from Hilly Fields and between Ladywell, Brockley and St. Johns train stations giving excellent transport links into London and the City

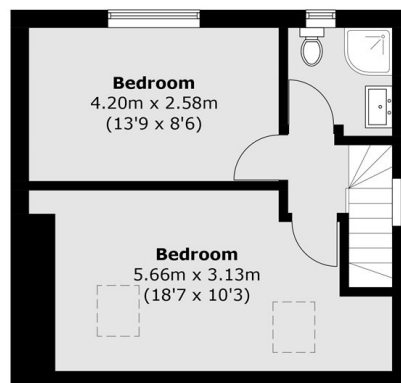
### Features

- Five Bedrooms
- Large Reception
- Private Rear Garden
- Close To Hilly Fields
- Close To Transport
- Chain Free

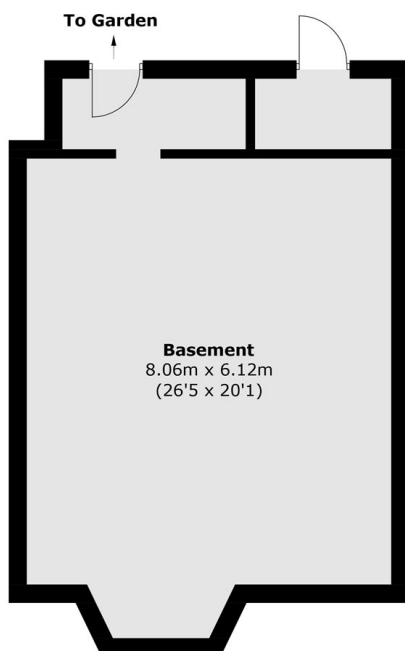
# Vicars Hill, London, SE13



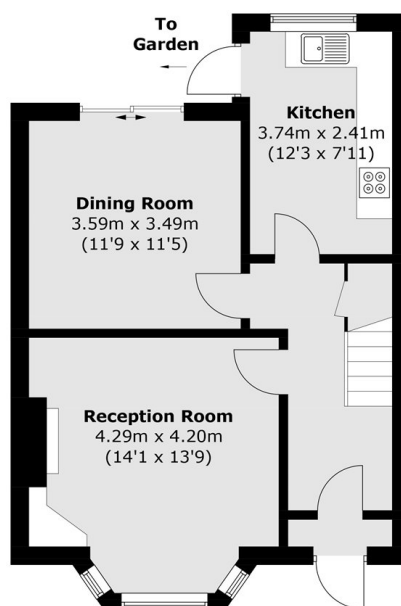
**First Floor**



**Second Floor**



**Basement**



**Ground Floor**

Total area (approx.): 179.9 sq. m (1,936.2 sq. ft)  
(Including Basement)  
External Cupboard (approx.): 2.9 sq. m (31.2 sq. ft)