



Thurston Road, SE13

£400,000

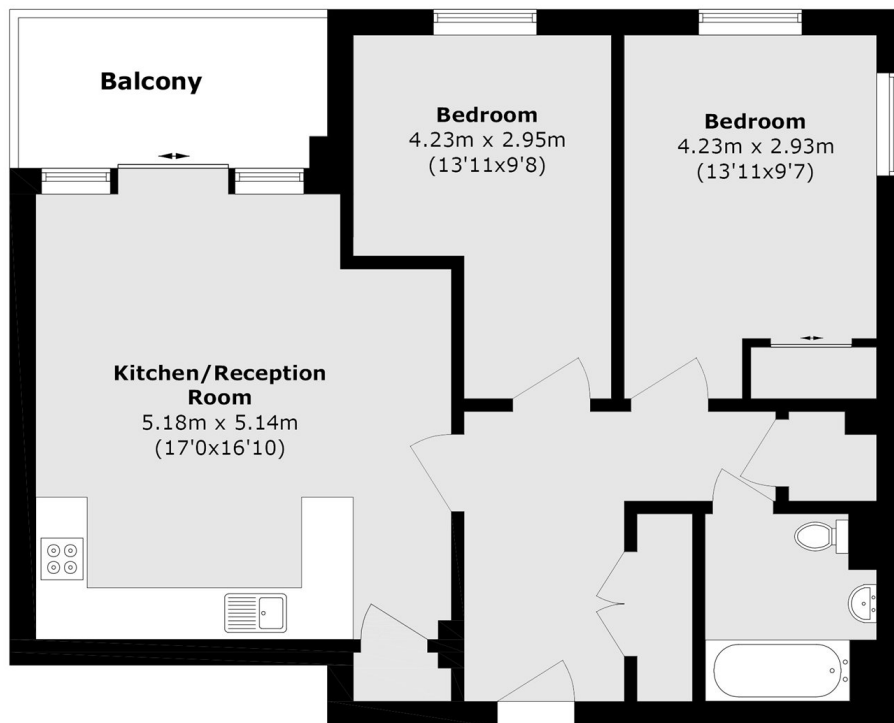
A two bedroom apartment on the tenth floor of a well maintained modern build moments from Lewisham town centre. This open plan, lateral flat has a favourable aspect balcony with fantastic views of the London skyline.

Thurston Road is conveniently located for both Lewisham and Deptford DLR with Brockley Market moments away. Well positioned for Lewisham train station with easy commute into London Bridge and Canary Wharf.

Features

- Two Double Bedrooms
- Sizeable Balcony
- Communal Roof Terrace
- Lift Access
- Close to Transport
- Chain Free

Thurston Road, London, SE13



Total area (approx.): 66.2 sq. m (712.6 sq. ft)

Balcony area (approx.): 6.8 sq. m (73.2 sq. ft)