



Harefield Road, SE4

£500,000

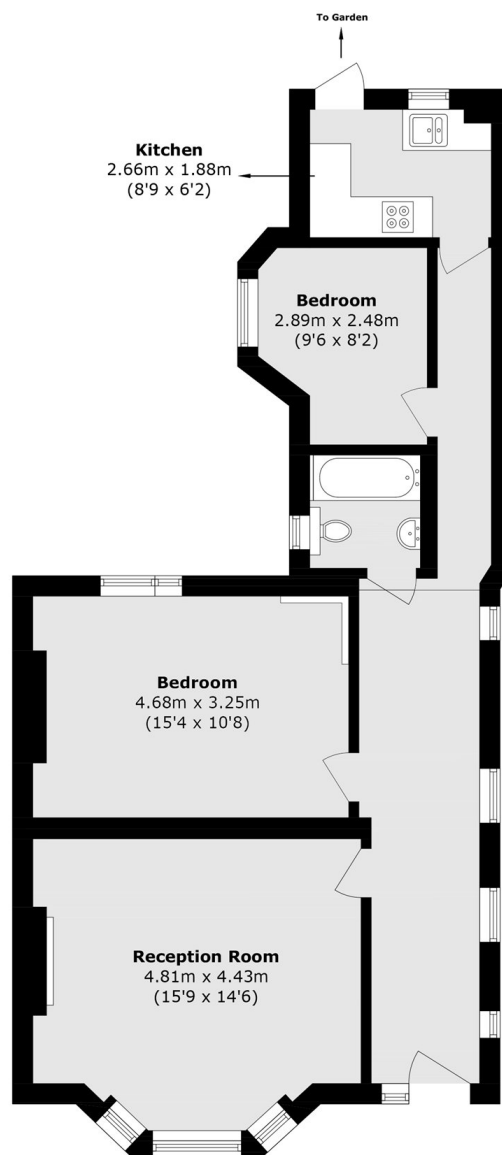
A two bedroom apartment with a freehold share and private entrance on the ground floor of a charming Victorian building. There is a generous bay fronted reception room, a large principal bedroom with a versatile second bedroom and a kitchen leading out on to a private section of the generous rear garden.

Harefield Road is a prime road in the Brockley Conservation area with excellent transport links from Brockley, Crofton Park and Ladywell train stations.

Features

- Private Entrance
- Two Bedrooms
- Private Section Of Garden
- Brockley Conservation
- Share Of Freehold
- No Onward Chain

Harefield Road, London, SE4



Total area (approx.): 69.2 sq. m (744.8 sq. ft)

Dexters

Brockley
369 Brockley Road
London
SE4 2AG
Sales
020 8815 2220

Energy Rating: D. We aim to make our particulars both accurate and reliable. However they are not guaranteed; nor do they form part of an offer or contract. If you require clarification on any points then please contact us, especially if you're traveling some distance to view. Please note that appliances and heating systems have not been tested and therefore no warranties can be given as to their good working order.

 **RICS** | Regulated
Estate Agent
and Letting Agent

[dexters.co.uk](https://www.dexters.co.uk)