

Tressillian Road, SE4

£500,000

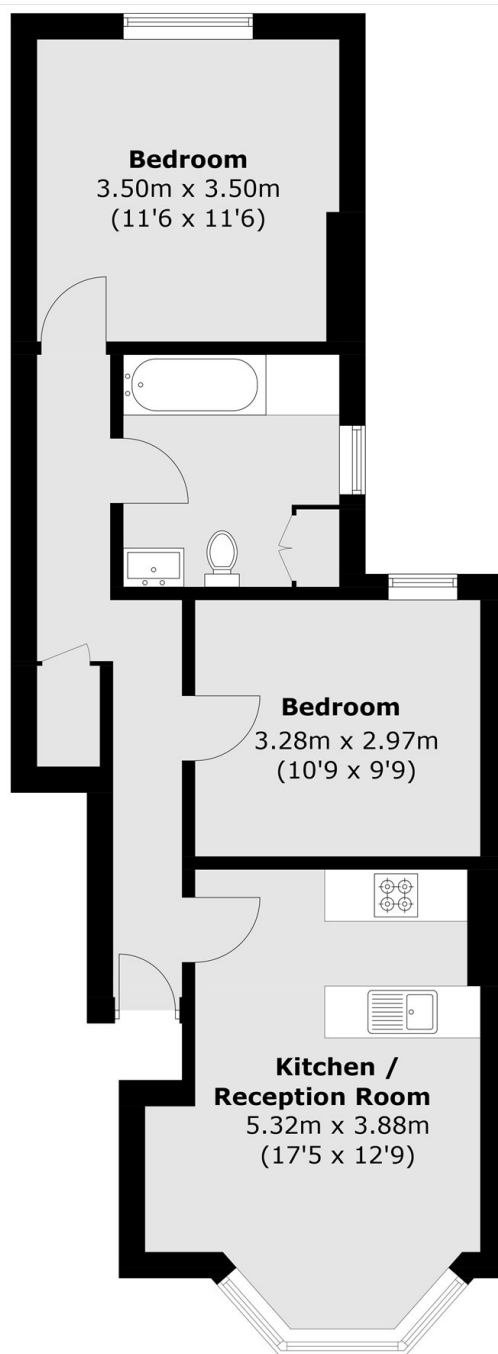
A ground floor period conversion flat favourably positioned moments from Hilly Fields. A kitchen/reception with tall ceilings and two double bedrooms make this a must see flat.

Tressillian Road is a highly sought after road in the Brockley Conservation area with excellent transport links from Brockley, St. John's and Ladywell train stations.

Features

Well Presented
Two Bedrooms
Kitchen/Reception
Great Transport
Brockley Conservation

Tressillian Road, London, SE4



Ground Floor

Total area (approx.): 56.5 sq. m (608.2 sq. ft)