



Elsiemaud Road, SE4

£800,000

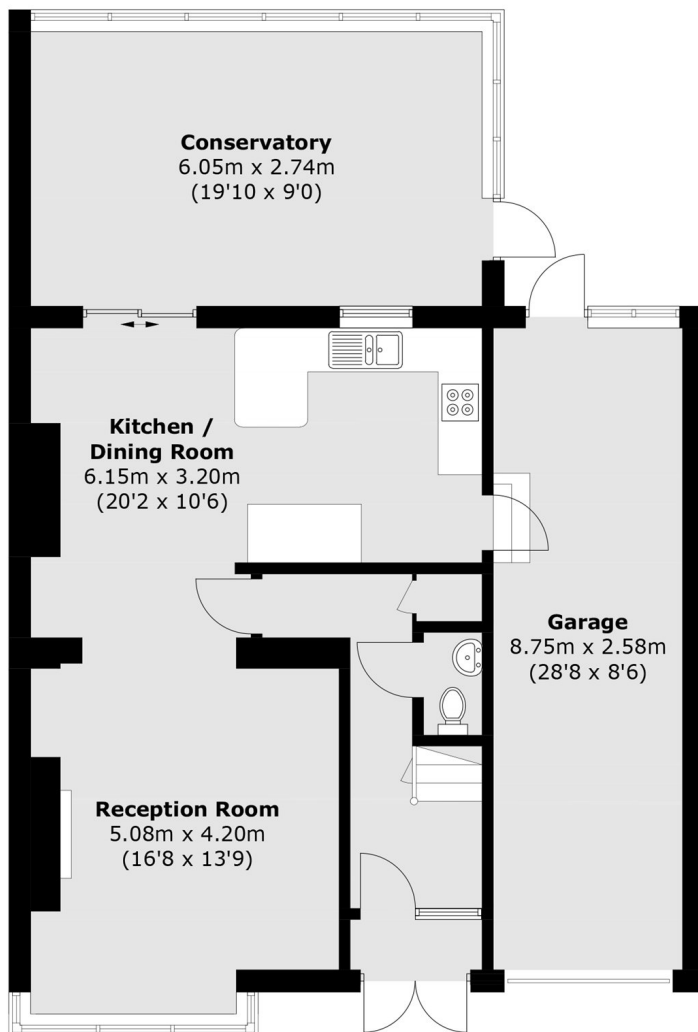
A three bedroom semi-detached house with garage and off street parking on a prime Heath Estate Road. The house offers the potential to create a beautiful family home and is offered with no onward chain.

Elsiemaud Road is a quiet residential street perfectly positioned for Crofton Park and Ladywell Stations, the open spaces of Hilly Fields and the ever popular Gordonbrock Primary School. There are numerous cafés, restaurants and bars all within easy reach.

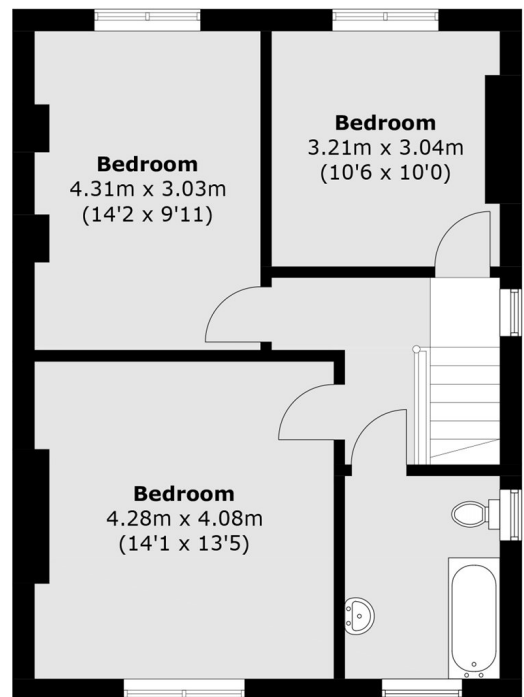
Features

- Semi Detached House
- Three Bedrooms
- Garage
- Off Street Parking
- Large Rear Garden
- No Onward Chain

Elsiemaud Road, London, SE4



Ground Floor



First Floor

Total area (approx.): 160.7 sq. m (1,729.8 sq. ft)
(Including Garage)