



## Hither Green Lane, SE13

### £400,000

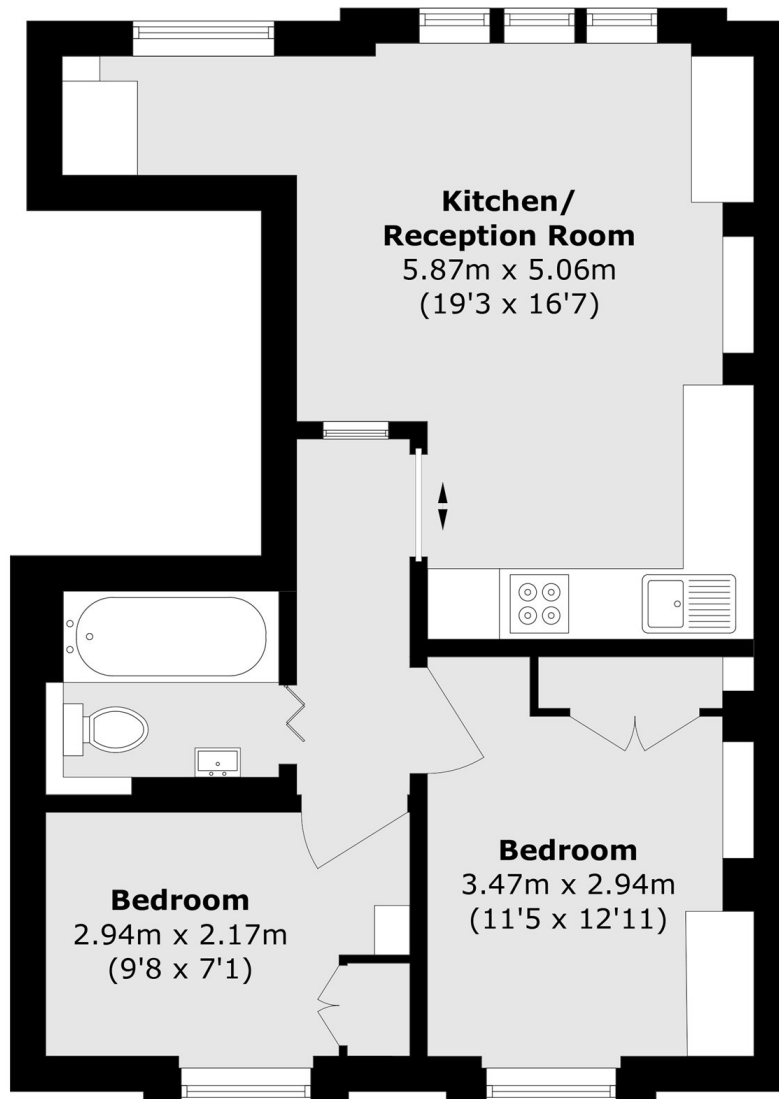
An exceptionally well presented two bedroom, period conversion flat. Beautifully presented to blend both style and comfort, with a bright a spacious reception area, along with a modern bathroom.

The open green spaces of Mountsfield Park, Lewisham Park and Ladywell Fields are popular nearby destinations, with Hither Green Station being within walking distance and providing regular trains into the city.

### Features

- Chain Free
- Two Bedrooms
- Close To Stations
- Green Spaces Nearby
- Close To Amenities
- No Onward Chain

Hither Green Lane,  
London, SE13



Total area (approx.): 43.8 sq. m (471.4 sq. ft)

**Dexters**

Brockley  
369 Brockley Road  
London  
SE4 2AG  
Sales  
020 8815 2220

Energy Rating: C. We aim to make our particulars both accurate and reliable. However they are not guaranteed; nor do they form part of an offer or contract. If you require clarification on any points then please contact us, especially if you're traveling some distance to view. Please note that appliances and heating systems have not been tested and therefore no warranties can be given as to their good working order.

 **RICS** | Regulated  
Estate Agent  
and Letting Agent

[dexters.co.uk](https://www.dexters.co.uk)